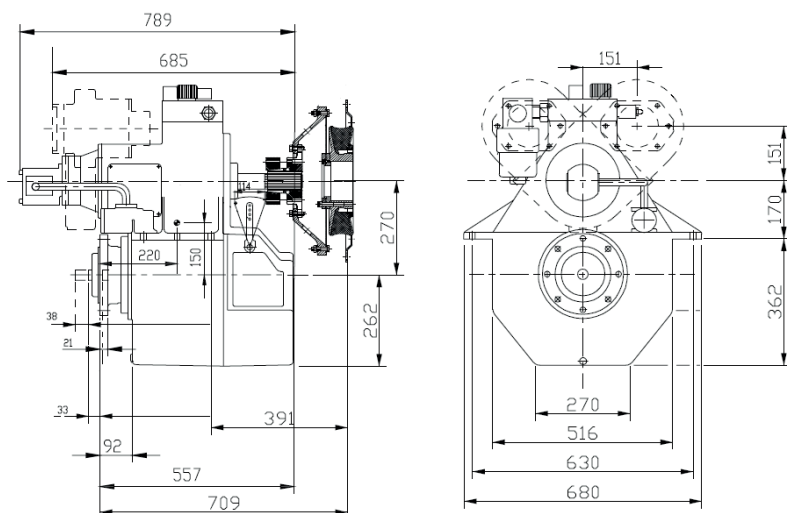


270HS - MARINE GEARBOX



Reduction Ratio	Power Factor kW/RPM	Input Shaft Diameter mm
1,61-1,97-2,47-2,96-3,52:1	0,220	50
3,95-4,47-5,12-5,51:1	0,163	45
5,93:1	0,145	45
6,53:1	0,128	45

Servo for CP Propeller:

Max force = 93 kN

Max stroke = 76 mm

PTO/:

PTO with SAE C-flange and 14 tooth 1 1/4" involute inside spline

Other SAE and ISO flanges and splines available

Free shaft end also available

Max torque from PTO: 600 Nm

Weight:

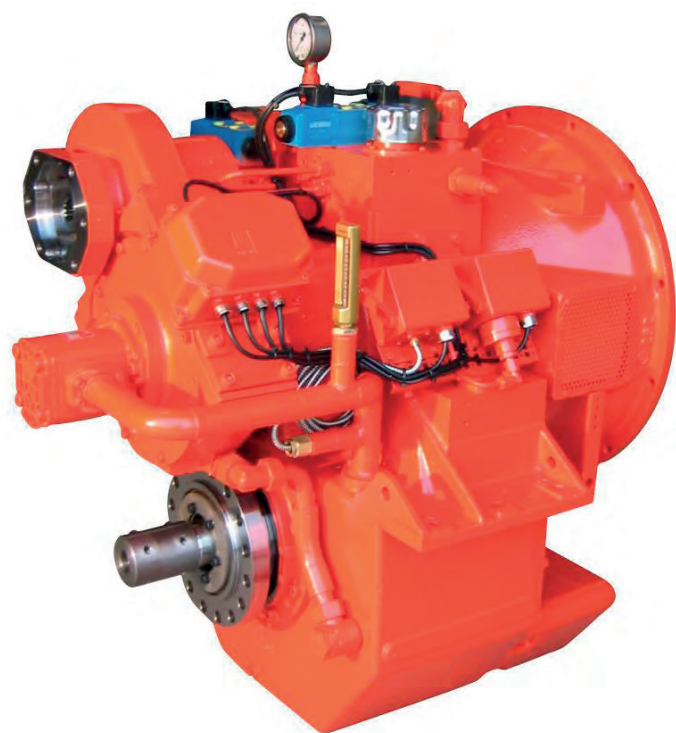
Approx. 375 kg plus approx. 20 kg per PTO

Gearbox:

- Built-in servo system for CP propeller
- Compact design
- Large economical reduction ratio
- Option of 1 or 2 PTOs each with own hydraulic clutch
- Rigid cast iron housing
- Helical ground gearwheels in casehardened and highly alloyed steel
- Hydraulic multi-plate clutch
- Oil system with direct driven oil pump, cooler, filter, valves etc.
- Pressure lubricated spherical roller bearings
- Designed according to the rules of the classification societies
- Each gearbox is tested and approved in test bed

Variants:

270HS/LS extra long stroke for feathering propeller



Manufacturer of **mekanord** gearboxes

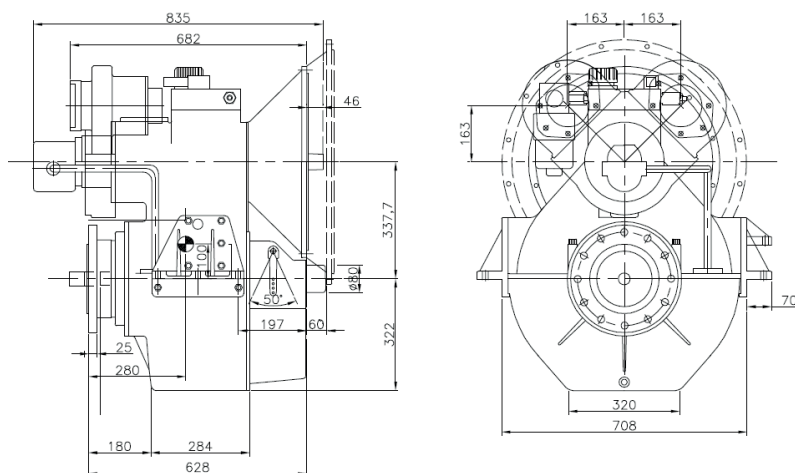
For further details and additional information,
please contact our technical sales organization

sales@meproduction.dk



MEPRODUCTION
EFFICIENCY THROUGH SIMPLICITY

337HS - MARINE GEARBOX



Reduction Ratio	Power Factor kW/RPM	Input Shaft Diameter mm
2,48-3,00-3,54-4,14:1	0,278	50
4,55-5,11-5,47-5,94:1	0,220	50

Servo for CP Propeller:

Max force = 120 kN

Max stroke = 90 mm

PTO/PTI:

PTO with SAE C-flange and 14 tooth 1 1/4" involute inside spline

Other SAE and ISO flanges and splines available

Free shaft end also available

Max torque from PTO: 800 Nm

Weight:

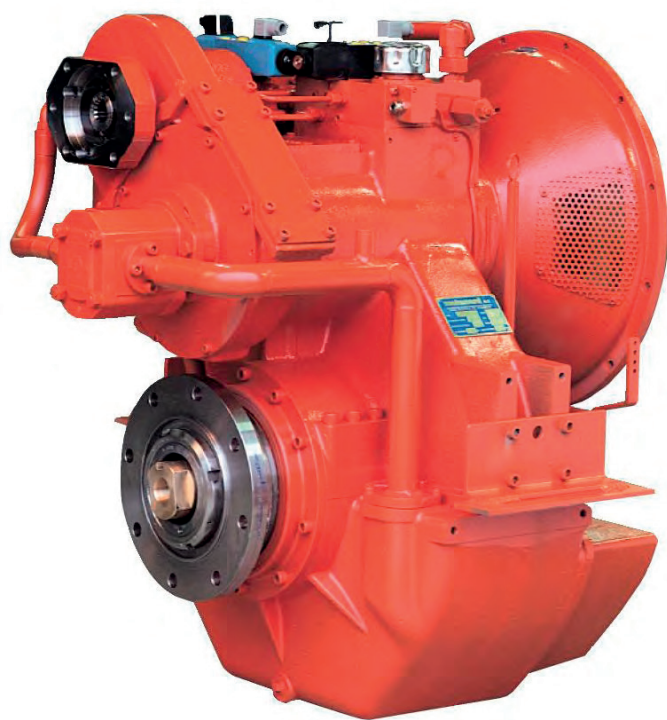
Approx. 550 kg plus approx. 50 kg per PTO

Gearbox:

- Built-in servo system for CP propeller
- Compact design
- Large economical reduction ratio
- Option of 1 or 2 PTOs each with own hydraulic clutch
- Rigid cast iron housing
- Helical ground gearwheels in casehardened and highly alloyed steel
- Hydraulic multi-plate clutch
- Oil system with direct driven oil pump, cooler, filter, valves etc.
- Pressure lubricated spherical roller bearings
- Designed according to the rules of the classification societies
- Each gearbox is tested and approved in test bed

Variants:

337HS-IS with built-in intermediate shaft for counter rotating propeller



Manufacturer of **mekanord** gearboxes

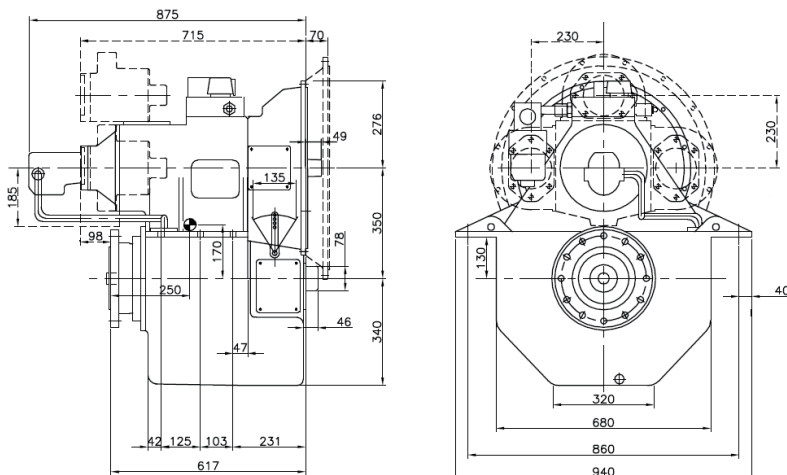
For further details and additional information,
please contact our technical sales organization

sales@meproduction.dk



MEPRODUCTION
EFFICIENCY THROUGH SIMPLICITY

350HS - MARINE GEARBOX



Reduction Ratio	Power Factor kW/RPM	Input Shaft Diameter mm
1,96-2,53-3,04-3,52:1	0,302	60
4,14-4,65-5,12-5,53:1	0,302	60
5,94:1	0,278	55
6,35:1	0,236	55
6,94:1	0,208	55

Servo for CP Propeller:

Max force = 120 kN

Max stroke = 90 mm

PTO:

PTO with SAE C-flange and 14 tooth 1 1/4" involute inside spline

Other SAE and ISO flanges and splines available

Free shaft end also available

Max torque from PTO: 800 Nm

Weight:

Approx. 600 kg plus approx. 25 kg per PTO

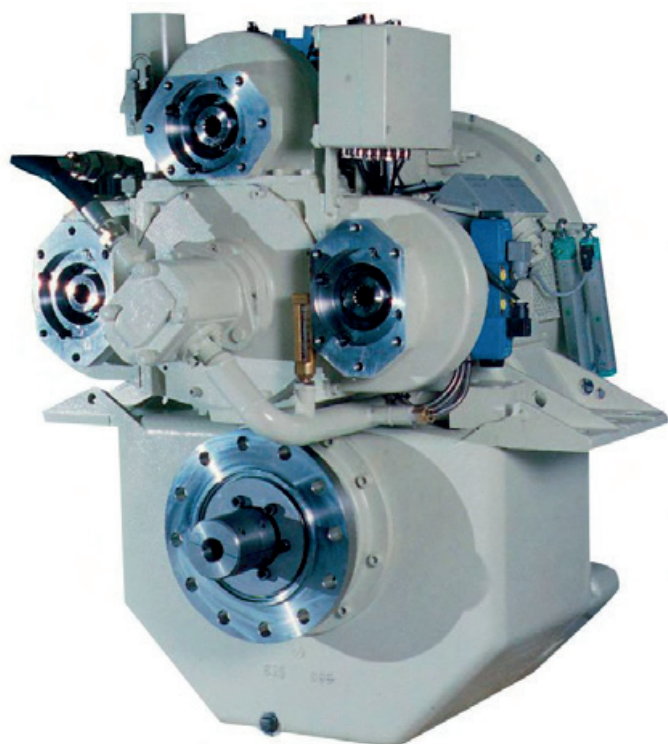
Gearbox:

- Built-in servo system for CP propeller
- Compact design
- Large economical reduction ratio
- Option of 1, 2 or 3 PTOs each with own hydraulic clutch
- Rigid cast iron housing
- Helical ground gearwheels in casehardened and highly alloyed steel
- Hydraulic multi-plate clutch
- Oil system with direct driven oil pump, cooler, filter, valves etc.
- Pressure lubricated spherical roller bearings
- Designed according to the rules of the classification

Variants:

350HS/LS extra long stroke for feathering propeller

350HS with reverse gear for counter rotating propeller



Manufacturer of **mekanord** gearboxes

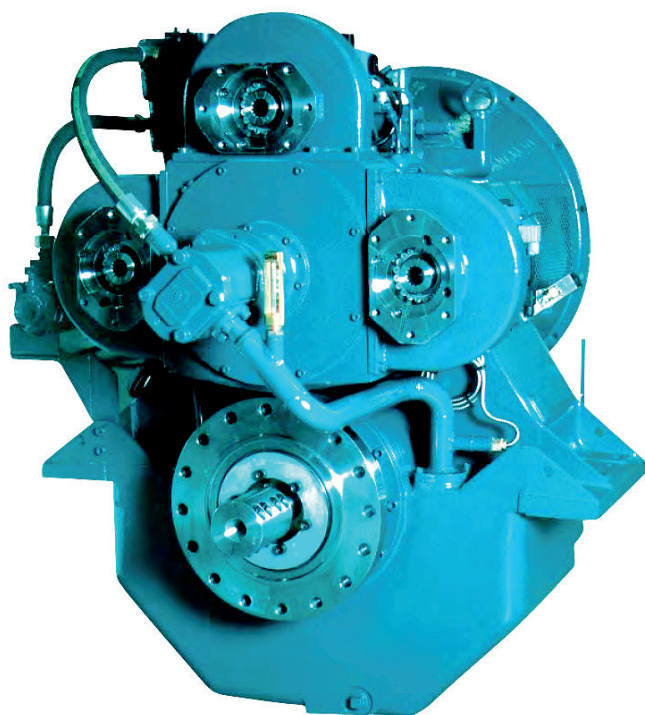
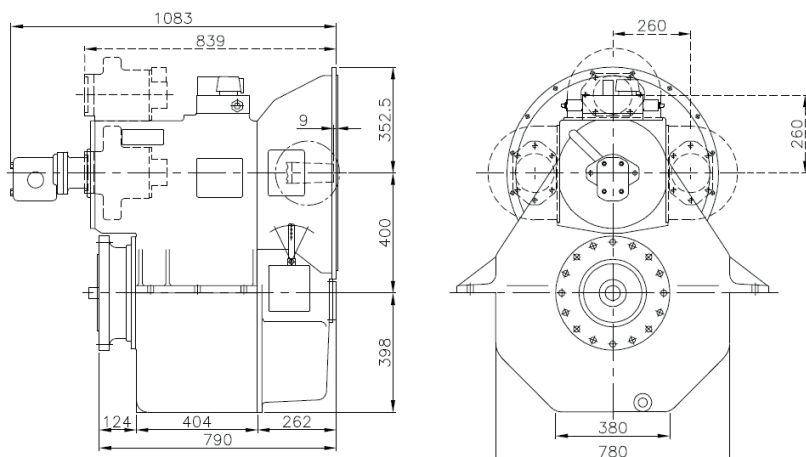
For further details and additional information,
please contact our technical sales organization

sales@meproduction.dk



MEPRODUCTION
EFFICIENCY THROUGH SIMPLICITY

400HS - MARINE GEARBOX



Reduction Ratio	Power Factor kW/RPM	Input Shaft Diameter mm
3,04-3,57-4,11-4,65-5,17:1	0,540	70
5,53:1	0,518	70
5,94:1	0,453	70
6,59:1	0,367	70
6,89:1	0,344	70

Servo for CP Propeller:

Max force = 150 kN

Max stroke = 120 mm

PTO:

PTO with SAE C-flange and 14 tooth 1 ¼" involute inside spline

Other SAE and ISO flanges and splines available

Free shaft end also available

Max torque from PTO: 900 Nm

Weight:

Approx. 900 kg plus approx. 25 kg per PTO

Gearbox:

- Built-in servo system for CP propeller
- Compact design
- Large economical reduction ratio
- Option of 1, 2 or 3 PTOs each with own hydraulic clutch
- Rigid cast iron housing
- Helical ground gearwheels in casehardened and highly alloyed steel
- Hydraulic multi-plate clutch
- Oil system with direct driven oil pump, cooler, filter, valves etc.
- Pressure lubricated spherical roller bearings
- Designed according to the rules of the classification societies
- Each gearbox is tested and approved in test bed

Variants:

400HS/LS extra long stroke for feathering propeller

400HS with reverse gear for counter rotating propeller

Manufacturer of **mekanord** gearboxes

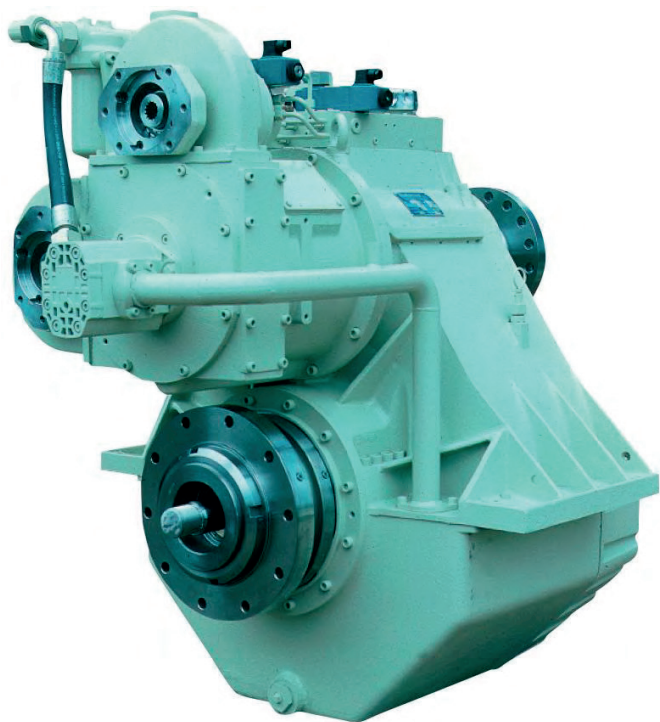
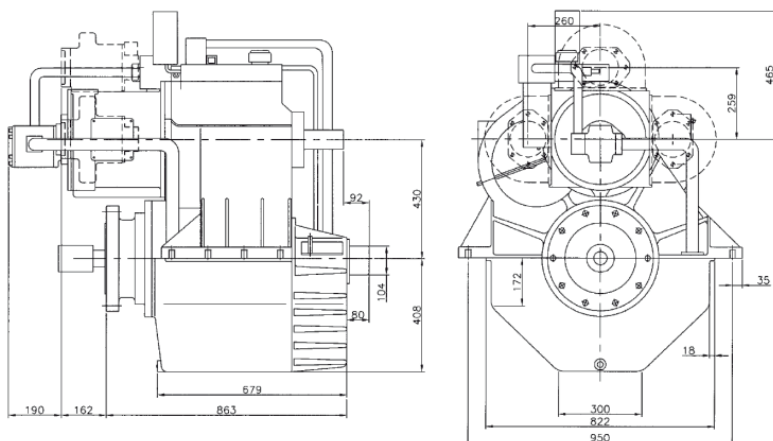
For further details and additional information,
please contact our technical sales organization

sales@meproduction.dk



MEPRODUCTION
EFFICIENCY THROUGH SIMPLICITY

430HS - MARINE GEARBOX



Reduction Ratio	Power Factor kW/RPM	Input Shaft Diameter mm
1,56-2,04-2,48-3,12-3,48:1	0,690	80
4,15-4,45-5,12:1	0,690	80
5,44:1	0,613	80
4,56-5,04:1	0,540	70
5,56:1	0,540	70
5,87:1	0,530	70
6,53:1	0,460	70

Servo for CP Propeller:

Max force = 200 kN

Max stroke = 124 mm

PTO:

PTO with SAE D-flange and 14 tooth 1 1/4" involute inside spline

Other SAE and ISO flanges and splines available

Free shaft end also available

Max torque from PTO: 900 Nm

Weight:

Approx. 1340 kg plus approx. 40 kg per PTO

Gearbox:

- Built-in servo system for CP propeller
- Compact design
- Large economical reduction ratio
- Option of 1, 2 or 3 PTOs each with own hydraulic clutch
- Rigid cast iron housing
- Helical ground gearwheels in casehardened and highly alloyed steel
- Hydraulic multi-plate clutch
- Oil system with direct driven oil pump, cooler, filter, valves etc.
- Pressure lubricated spherical roller bearings
- Designed according to the rules of the classification societies
- Each gearbox is tested and approved in test bed

Variants:

430-2HS 2-step gearbox for high reduction ratios

Manufacturer of **mekanord** gearboxes

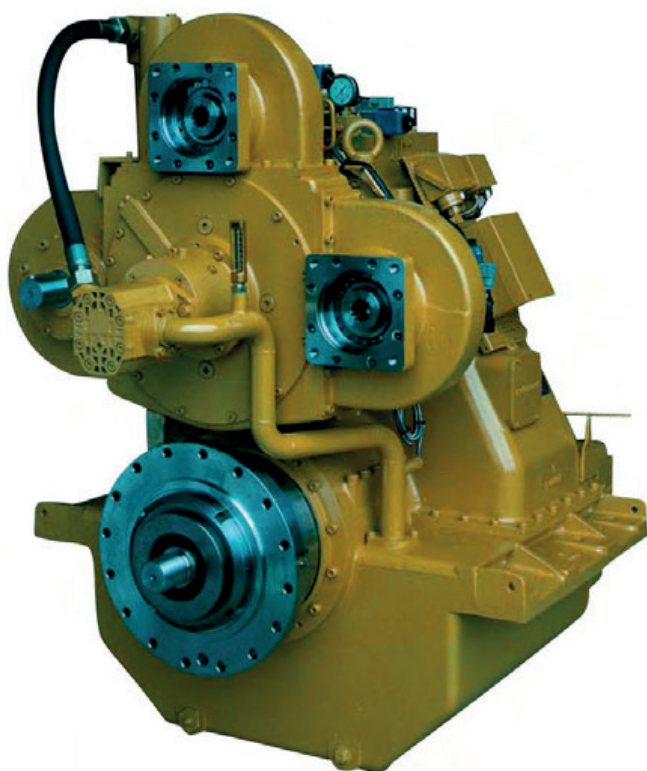
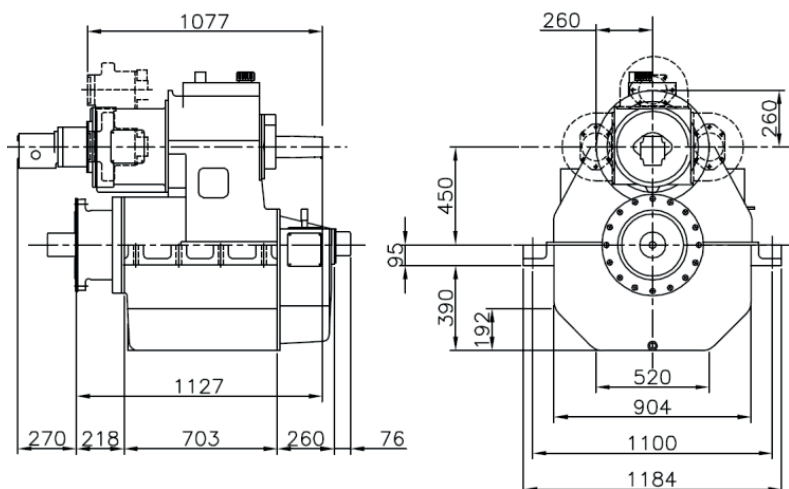
For further details and additional information,
please contact our technical sales organization

sales@meproduction.dk



MEPRODUCTION
EFFICIENCY THROUGH SIMPLICITY

450HS - MARINE GEARBOX



Reduction Ratio	Power Factor kW/RPM	Input Shaft Diameter mm
3,11-3,58:1	1,500	100
4,18-4,44:1	1,120	100
5,11:1	0,972	80
5,47:1	0,889	80
5,94:1	0,773	80
6,47:1	0,670	80

Servo for CP Propeller:

Max force = 300 kN

Max stroke = 180 mm

PTO:

PTO with SAE D-flange and 13 tooth 1 3/4" involute inside spline

Other SAE and ISO flanges and splines available

Free shaft end also available

Max torque from PTO: 2000 Nm

Weight:

Approx. 2400 kg plus approx. 70 kg per PTO

Gearbox:

- Built-in servo system for CP propeller
- Compact design
- Large economical reduction ratio
- Option of 1, 2 or 3 PTOs each with own hydraulic clutch
- Rigid cast iron housing
- Helical ground gearwheels in casehardened and highly alloyed steel
- Hydraulic multi-plate clutch
- Oil system with direct driven oil pump, cooler, filter, valves etc.
- Pressure lubricated spherical roller bearings
- Designed according to the rules of the classification societies
- Each gearbox is tested and approved in test bed

Variants:

450OD prepared for OD system

Manufacturer of **mekanord** gearboxes

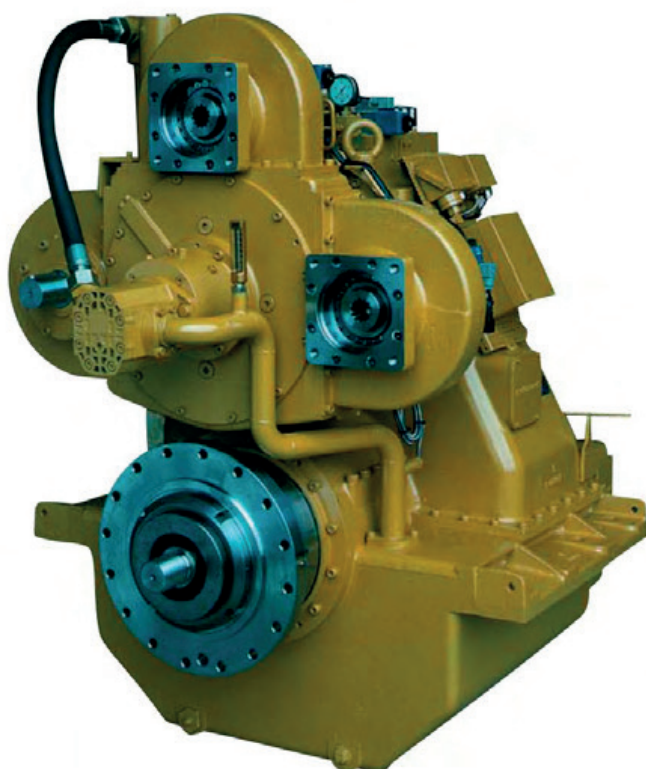
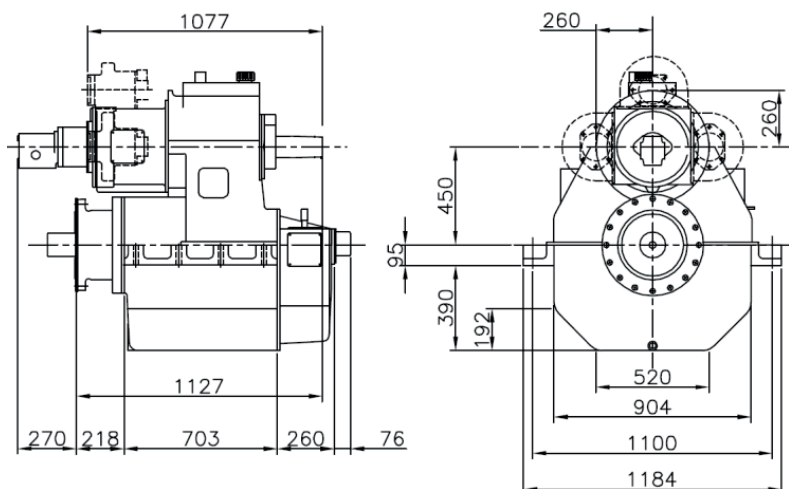
For further details and additional information,
please contact our technical sales organization

sales@meproduction.dk



MEPRODUCTION
EFFICIENCY THROUGH SIMPLICITY

4500D - MARINE GEARBOX



Reduction Ratio	Power Factor kW/RPM	Input Shaft Diameter mm
3,11-3,58:1	1,500	100
4,18-4,44:1	1,120	100
5,11:1	0,972	80
5,47:1	0,889	80
5,94:1	0,773	80
6,47:1	0,670	80

PTO:

PTO with SAE D-flange and 13 tooth 1 3/4" involute inside spline

Other SAE and ISO flanges and splines available

Free shaft end also available

Max torque from PTO: 2000 Nm

Weight:

Approx. 2350 kg plus approx. 70 kg per PTO

Gearbox:

- Prepared for OD system
- Compact design
- Large economical reduction ratio
- Option of 1, 2 or 3 PTOs each with own hydraulic clutch
- Rigid cast iron housing
- Helical ground gearwheels in casehardened and highly alloyed steel
- Hydraulic multi-plate clutch
- Oil system with direct driven oil pump, cooler, filter, valves etc.
- Pressure lubricated spherical roller bearings
- Designed according to the rules of the classification societies
- Each gearbox is tested and approved in test bed

Variants:

450HS with built-in servo system for CP propeller

Manufacturer of **mekanord** gearboxes

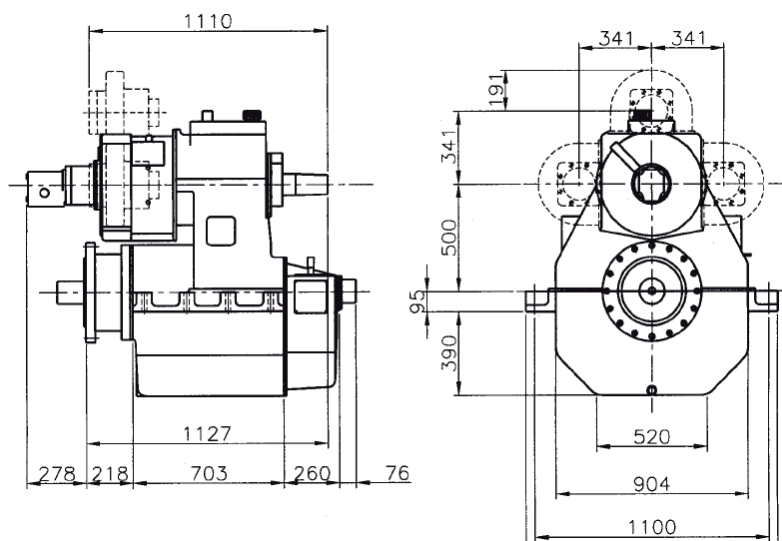
For further details and additional information,
please contact our technical sales organization

sales@meproduction.dk



MEPRODUCTION
EFFICIENCY THROUGH SIMPLICITY

500HS - MARINE GEARBOX



Manufacturer of **mekanord** gearboxes

Reduction Ratio	Power Factor kW/RPM	Input Shaft Diameter mm
2,03-2,56-3,04-3,32:1	2,400	120
3,63:1	2,315	120
4,24:1	1,803	120
4,39:1	1,752	120
3,52-4,05:1	1,650	100
4,65:1	1,433	100
4,94:1	1,345	100
5,67:1	1,026	100
6,06:1	0,951	100
6,56:1	0,810	100

Servo for CP Propeller:

Max force = 300 kN

Max stroke = 180 mm

PTO/PTI:

PTO with SAE D-flange and 13 tooth 1 $\frac{3}{4}$ " involute inside spline

Other SAE and ISO flanges and splines available

Free shaft end also available

Max torque from PTO: 2000 Nm

Max torque from PTO/PTI: 3500 Nm

Weight:

Approx. 2400 kg plus approx. 70 kg per PTO

Gearbox:

- Built-in servo system for CP propeller
- Compact design
- Large economical reduction ratio
- Option of 1, 2 or 3 PTOs each with own hydraulic clutch
- Rigid cast iron housing
- Helical ground gearwheels in casehardened and highly alloyed steel
- Hydraulic multi-plate clutch
- Oil system with direct driven oil pump, cooler, filter, valves etc.
- Pressure lubricated spherical roller bearings
- Designed according to the rules of the classification societies
- Each gearbox is tested and approved in test bed

Variants:

500HS/PTI with PTI shaft

500-2HS 2-step gearbox for high reduction ratios

500OD prepared for OD system

500OD/PTI with PTI shaft

500-2OD 2-step gearbox for high reduction ratios

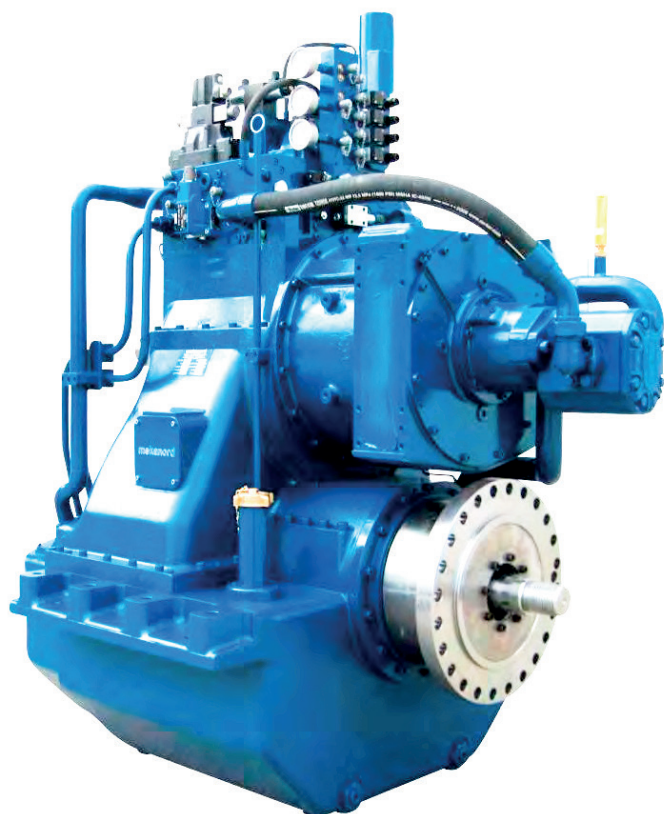
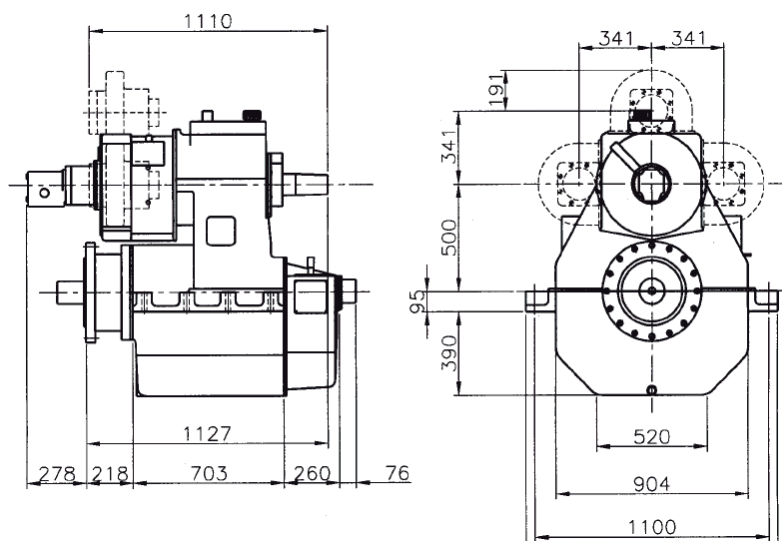
For further details and additional information,
please contact our technical sales organization

sales@meproduction.dk



MEPRODUCTION
EFFICIENCY THROUGH SIMPLICITY

500OD - MARINE GEARBOX



Manufacturer of **mekanord** gearboxes

Reduction Ratio	Power Factor kW/RPM	Input Shaft Diameter mm
2,03-2,56-3,04-3,32:1	2,400	120
3,63:1	2,315	120
4,24:1	1,803	120
4,39:1	1,752	120
3,52-4,05:1	1,650	100
4,65:1	1,433	100
4,94:1	1,345	100
5,67:1	1,026	100
6,06:1	0,951	100
6,56:1	0,810	100

PTO/PTI:

PTO with SAE D-flange and 13 tooth 1 3/4" involute inside spline

Other SAE and ISO flanges and splines available

Free shaft end also available

Max torque from PTO: 2000 Nm

Max torque from PTO/PTI: 3500 Nm

Weight:

Approx. 2350 kg plus approx. 70 kg per PTO

Gearbox:

- Prepared for OD system
- Compact design
- Large economical reduction ratio
- Option of 1, 2 or 3 PTOs each with own hydraulic clutch
- Rigid cast iron housing
- Helical ground gearwheels in casehardened and highly alloyed steel
- Hydraulic multi-plate clutch
- Oil system with direct driven oil pump, cooler, filter, valves etc.
- Pressure lubricated spherical roller bearings
- Designed according to the rules of the classification societies
- Each gearbox is tested and approved in test bed

Variants:

500HS with built-in servo system for CP propeller

500-2HS 2-step gearbox for high reduction ratios

500HS/PTI with PTI shaft

500OD/PTI with PTI shaft

500-2OD 2-step gearbox for high reduction ratios

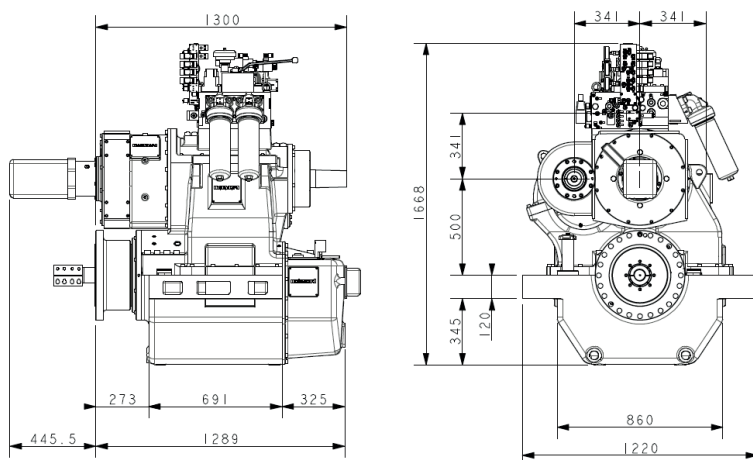
For further details and additional information,
please contact our technical sales organization

sales@meproduction.dk



MEPRODUCTION
EFFICIENCY THROUGH SIMPLICITY

500-2HS - MARINE GEARBOX



Manufacturer of **mekanord** gearboxes

Reduction Ratio	Power Factor kW/RPM	Input Shaft Diameter mm
6,58-7,05-7,61:1	1,050	90
7,93-8,49:1	0,910	90
9,16:1	0,894	90
9,91:1	0,861	90
10,68:1	0,842	90

Servo for CP Propeller:

Max force = 300 kN
Max stroke = 180 mm

PTO:

PTO with SAE C-flange and 13 tooth 1 3/4" involute inside spline
Other SAE and ISO flanges and splines available
Free shaft end also available
Max torque from PTO: 2000 Nm

Weight:

Approx. 3000 kg plus approx. 70 kg per PTO

Gearbox:

- Built-in servo system for CP propeller
- Compact design
- Large economical reduction ratio
- Option of 1, 2 or 3 PTOs each with own hydraulic clutch
- Rigid cast iron housing
- Helical ground gearwheels in casehardened and highly alloyed steel
- Hydraulic multi-plate clutch
- Oil system with direct driven oil pump, cooler, filter, valves etc.
- Pressure lubricated spherical roller bearings
- Designed according to the rules of the classification societies
- Each gearbox is tested and approved in test bed

Variants:

500HS 1-step gearbox for low reduction ratios
500HS/PTI with PTI shaft
500OD prepared for OD system
500OD/PTI with PTI shaft
500-2OD 2-step gearbox for high reduction ratios

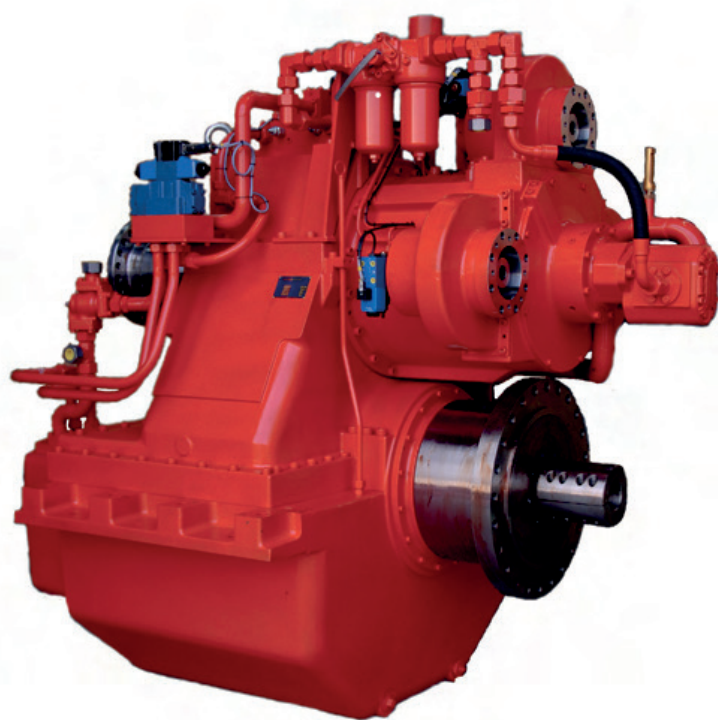
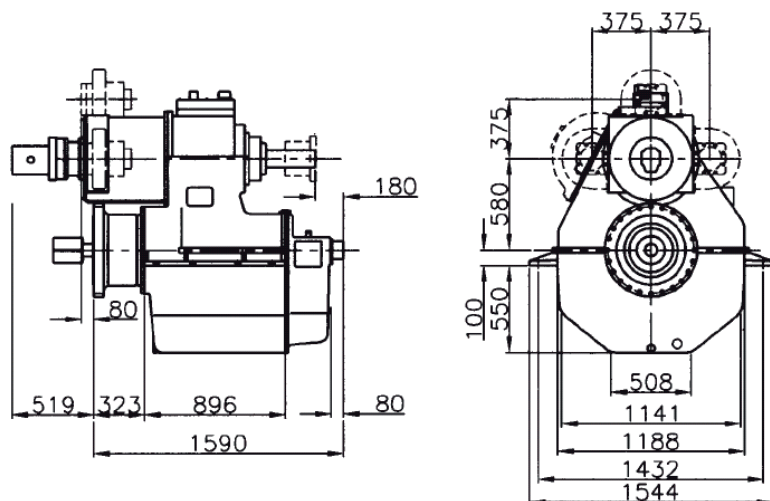
For further details and additional information,
please contact our technical sales organization

sales@meproduction.dk



MEPRODUCTION
EFFICIENCY THROUGH SIMPLICITY

580HS - MARINE GEARBOX



Reduction Ratio	Power Factor kW/RPM	Input Shaft Diameter mm
2,03-2,55-3,12-3,48:1	3,68	130
4,15:1	3,28	130
4,53:1	2,73	130
5,06:1	2,33	110
5,65:1	1,96	110
6,06:1	1,80	95
6,47:1	1,25	95
6,94:1	1,16	95

Servo for CP Propeller:

Max force = 730 kN

Max stroke = 190 mm

PTO/PTI:

PTO with SAE D-flange and 13 tooth 1 3/4" involute inside spline

Other SAE and ISO flanges and splines available

Free shaft end also available

Max torque from PTO: 2700 Nm

Max torque from PTO/PTI: 4700 Nm

Weight:

Approx. 4900 kg plus approx. 70 kg per PTO

Gearbox:

- Built-in servo system for CP propeller
- Compact design
- Large economical reduction ratio
- Option of 1, 2 or 3 PTOs each with own hydraulic clutch
- Rigid cast iron housing
- Helical ground gearwheels in casehardened and highly alloyed steel
- Hydraulic multi-plate clutch
- Oil system with direct driven oil pump, cooler, filter, valves etc.
- Pressure lubricated spherical roller bearings
- Designed according to the rules of the classification societies
- Each gearbox is tested and approved in test bed

Variants:

580HS-IS with intermediate shaft for counter rotating propeller

580HS/PTI with PTI shaft

580HS-H with horizontal offset

580OD prepared for OD system

580OD-IS with intermediate shaft for counter rotating propeller

580OD/PTI with PTI shaft

Manufacturer of **mekanord** gearboxes

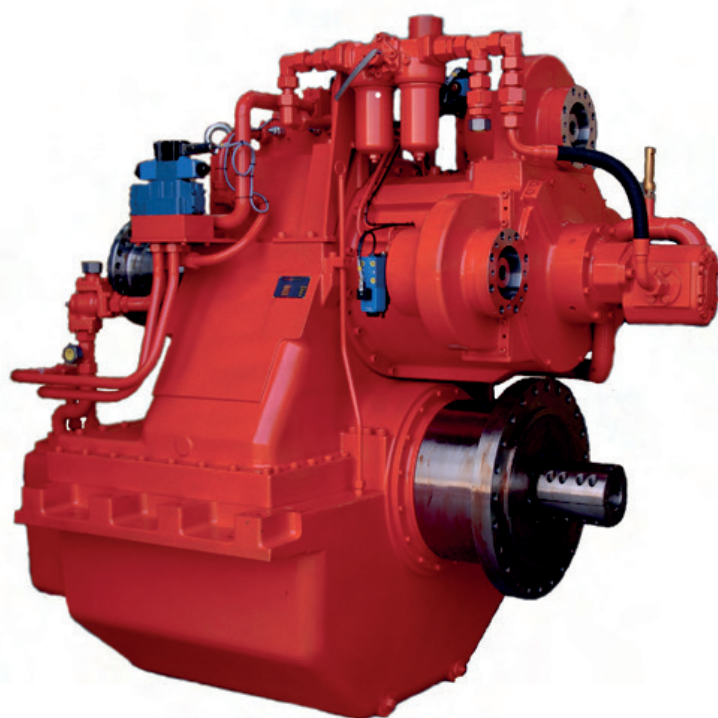
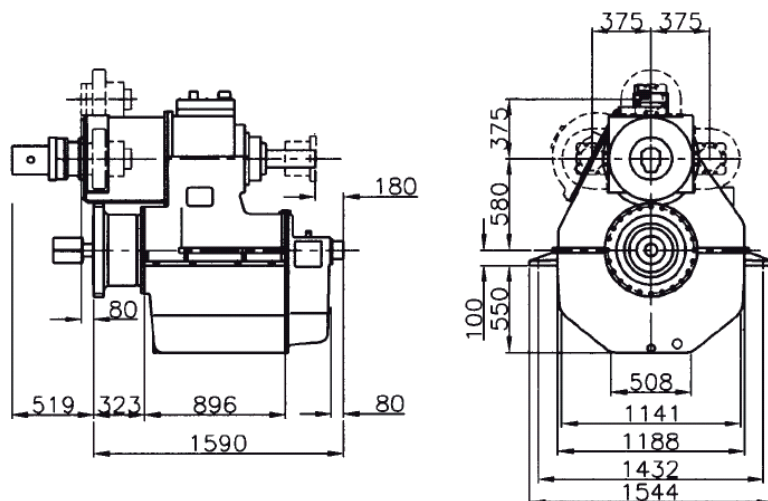
For further details and additional information,
please contact our technical sales organization

sales@meproduction.dk



MEPRODUCTION
EFFICIENCY THROUGH SIMPLICITY

5800D - MARINE GEARBOX



Reduction Ratio	Power Factor kW/RPM	Input Shaft Diameter mm
2,03-2,55-3,12-3,48:1	3,68	130
4,15:1	3,28	130
4,53:1	2,73	130
5,06:1	2,33	110
5,65:1	1,96	110
6,06:1	1,80	95
6,47:1	1,25	95
6,94:1	1,16	95

PTO/PTI:

PTO with SAE D-flange and 13 tooth 1 3/4" involute inside spline

Other SAE and ISO flanges and splines available

Free shaft end also available

Max torque from PTO: 2700 Nm

Max torque from PTO/PTI: 4700 Nm

Weight:

Approx. 4850 kg plus approx. 70 kg per PTO

Gearbox:

- Prepared for OD system
- Compact design
- Large economical reduction ratio
- Option of 1, 2 or 3 PTOs each with own hydraulic clutch
- Rigid cast iron housing
- Helical ground gearwheels in casehardened and highly alloyed steel
- Hydraulic multi-plate clutch
- Oil system with direct driven oil pump, cooler, filter, valves etc.
- Pressure lubricated spherical roller bearings
- Designed according to the rules of the classification societies
- Each gearbox is tested and approved in test bed

Variants:

580HS with built-in servo system for CP propeller

580HS/PTI with PTI shaft

580HS-IS with intermediate shaft for counter rotating propeller

580HS-H with horizontal offset

580OD-IS with intermediate shaft for counter rotating propeller

580OD/PTI with PTI shaft

Manufacturer of **mekanord** gearboxes

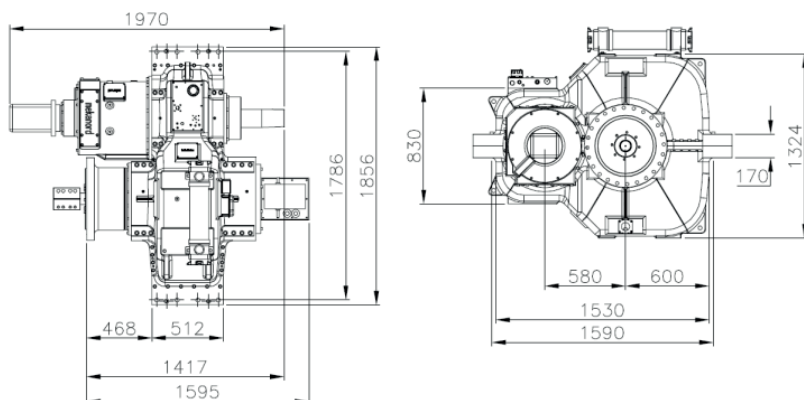
For further details and additional information,
please contact our technical sales organization

sales@meproduction.dk



MEPRODUCTION
EFFICIENCY THROUGH SIMPLICITY

580HS-H - MARINE GEARBOX



Reduction Ratio	Power Factor kW/RPM	Input Shaft Diameter mm
2,03-2,55-3,12-3,48:1	3,68	130
4,15:1	3,28	130
4,53:1	2,73	130
5,06:1	2,33	110
5,65:1	1,96	110
6,06:1	1,80	95
6,47:1	1,25	95
6,94:1	1,16	95

Servo for CP Propeller:

Max force = 730 kN

Max stroke = 190 mm

PTO/PTI:

PTO with SAE D-flange and 13 tooth 1 3/4" involute inside spline

Other SAE and ISO flanges and splines available

Free shaft end also available

Max torque from PTO: 2000 Nm

Max torque from PTO/PTI: 4700 Nm

Weight:

Approx. 4900 kg plus approx. 70 kg per PTO

Gearbox:

- Built-in servo system for CP propeller
- Compact design
- Large economical reduction ratio
- Option of 1, 2 or 3 PTOs each with own hydraulic clutch
- Rigid cast iron housing
- Helical ground gearwheels in casehardened and highly alloyed steel
- Hydraulic multi-plate clutch
- Oil system with direct driven oil pump, cooler, filter, valves etc.
- Pressure lubricated spherical roller bearings
- Designed according to the rules of the classification societies
- Each gearbox is tested and approved in test bed

Variants:

580HS with built-in servo system for CP propeller

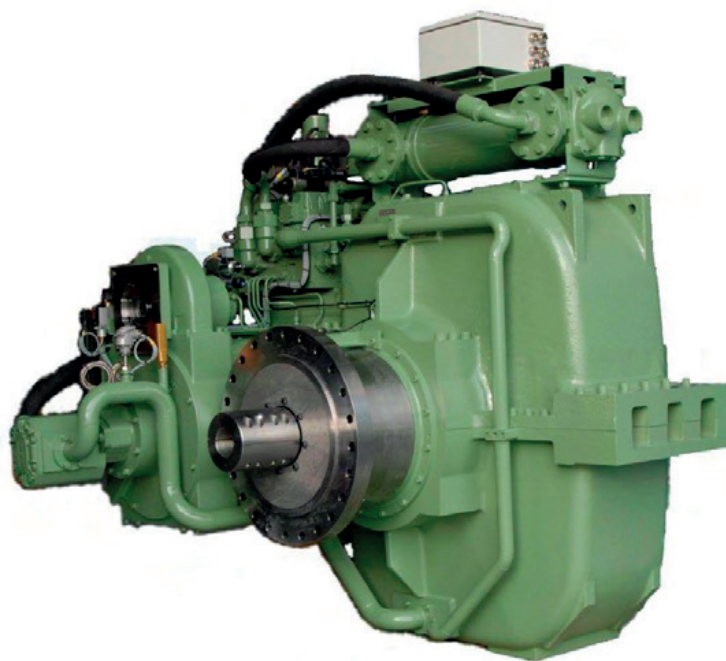
580HS/PTI with PTI shaft

580HS-IS with intermediate shaft for counter rotating propeller

580OD prepared for OD system

580OD-IS with intermediate shaft for counter rotating propeller

580OD/PTI with PTI shaft



Manufacturer of **mekanord** gearboxes

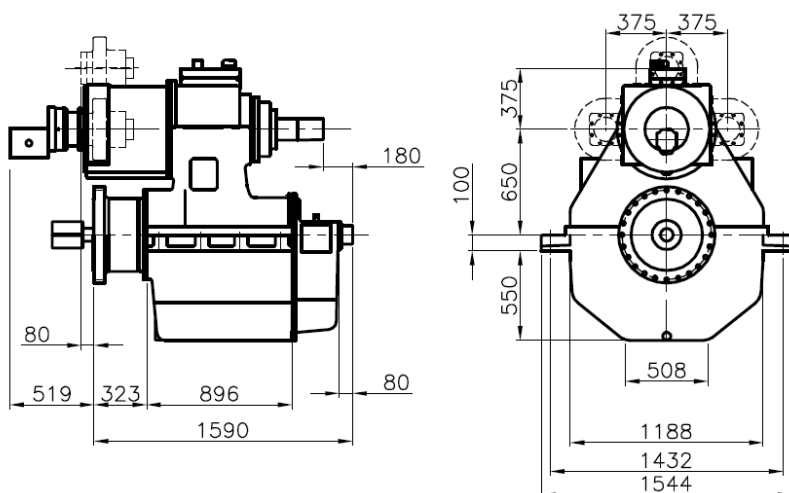
For further details and additional information,
please contact our technical sales organization

sales@meproduction.dk



MEPRODUCTION
EFFICIENCY THROUGH SIMPLICITY

650HS - MARINE GEARBOX



Reduction Ratio	Power Factor kW/RPM	Input Shaft Diameter mm
2,03-2,58-3,04-3,55:1	4,580	140
4,05:1	4,185	130
4,53:1	3,631	130
5,05:1	3,067	130
5,44:1	2,836	130
6,06:1	2,303	110
6,47:1	1,990	110

Servo for CP Propeller:

Max force = 730 kN

Max stroke = 190 mm

PTO/PTI:

PTO with SAE D-flange and 13 tooth 1 3/4" involute inside spline

Other SAE and ISO flanges and splines available

Free shaft end also available

Max torque from PTO: 2000 Nm

Max torque from PTO/PTI: 4700 Nm

Weight:

Approx. 5500 kg plus approx. 70 kg per PTO

Gearbox:

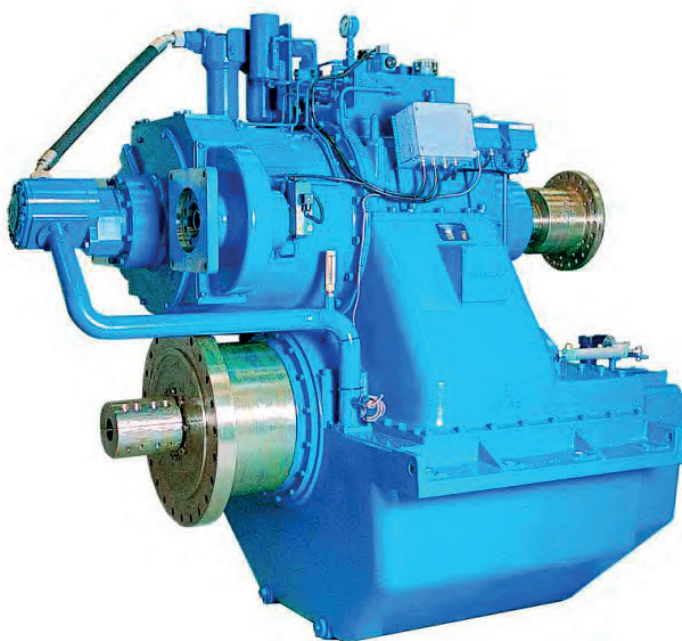
- Built-in servo system for CP propeller
- Compact design
- Large economical reduction ratio
- Option of 1, 2 or 3 PTOs each with own hydraulic clutch
- Rigid cast iron housing
- Helical ground gearwheels in casehardened and highly alloyed steel
- Hydraulic multi-plate clutch
- Oil system with direct driven oil pump, cooler, filter, valves etc.
- Pressure lubricated spherical roller bearings
- Designed according to the rules of the classification societies
- Each gearbox is tested and approved in test bed

Variants:

650HS/PTI with PTI shaft

650OD prepared for OD system

650OD/PTI with PTI shaft



Manufacturer of **mekanord** gearboxes

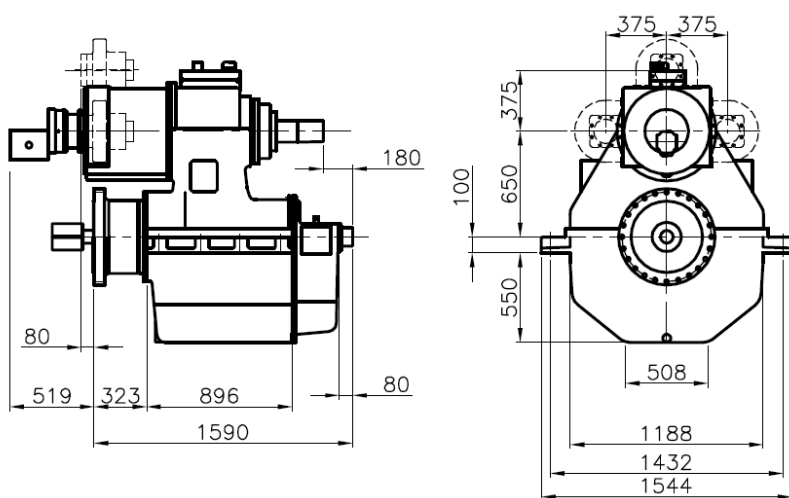
For further details and additional information,
please contact our technical sales organization

sales@meproduction.dk



MEPRODUCTION
EFFICIENCY THROUGH SIMPLICITY

650OD - MARINE GEARBOX



Reduction Ratio	Power Factor kW/RPM	Input Shaft Diameter mm
2,03-2,58-3,04-3,55:1	4,580	140
4,05:1	4,185	130
4,53:1	3,631	130
5,05:1	3,067	130
5,44:1	2,836	130
6,06:1	2,303	110
6,47:1	1,990	110

PTO/PTI:

PTO with SAE D-flange and 13 tooth 1 $\frac{3}{4}$ " involute inside spline

Other SAE and ISO flanges and splines available

Free shaft end also available

Max torque from PTO: 2000 Nm

Max torque from PTO/PTI: 4700 Nm

Weight:

Approx. 5450 kg plus approx. 70 kg per PTO

Gearbox:

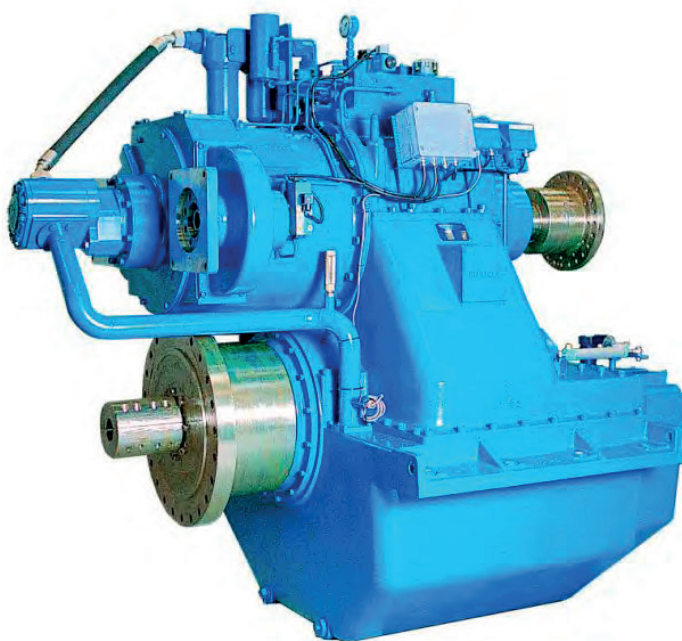
- Prepared for OD system
- Compact design
- Large economical reduction ratio
- Option of 1, 2 or 3 PTOs each with own hydraulic clutch
- Rigid cast iron housing
- Helical ground gearwheels in casehardened and highly alloyed steel
- Hydraulic multi-plate clutch
- Oil system with direct driven oil pump, cooler, filter, valves etc.
- Pressure lubricated spherical roller bearings
- Designed according to the rules of the classification societies
- Each gearbox is tested and approved in test bed

Variants:

650HS with built-in servo system for CP propeller

650HS/PTI with PTI shaft

650OD/PTI with PTI shaft



Manufacturer of **mekanord** gearboxes

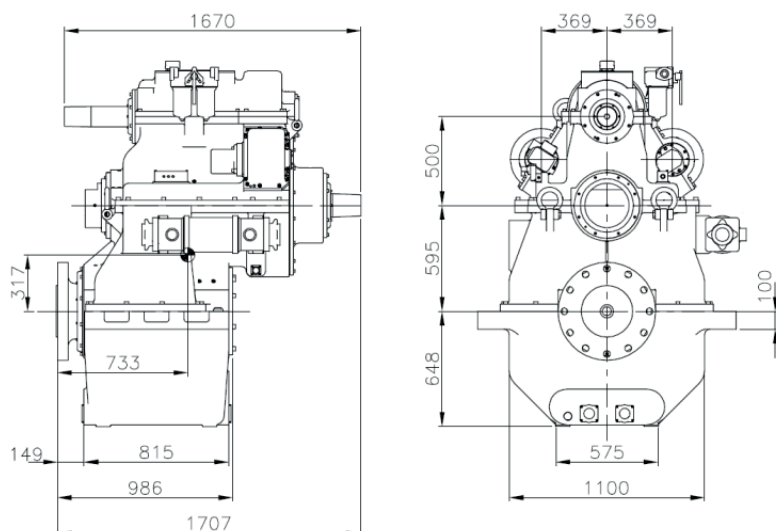
For further details and additional information,
please contact our technical sales organization

sales@meproduction.dk



MEPRODUCTION
EFFICIENCY THROUGH SIMPLICITY

60HS - MARINE GEARBOX



Reduction Ratio	Power Factor kW/RPM	Input Shaft Diameter mm
2,84-3,67:1	3,70	130
4,06:1	3,70	130
4,44:1	3,60	130
4,94:1	3,00	130
5,61:1	2,60	130
5,94:1	2,30	130
6,06:1	1,97	130
8,18:1	1,50	130

Servo for CP Propeller:

Max force = 1200 kN

Max stroke = 175 mm

PTO/PTI:

PTO/PTI with free shaft

PTO max step-up 1:2,24

PTI max step-up 1:3,21

Max torque from PTO: 4000 Nm

Max torque from PTO/PTI: 8500 Nm

Weight:

Approx. 5500 kg plus approx. 70 kg per PTO

Gearbox:

- Built-in servo system for CP propeller
- Compact design
- Large economical reduction ratio
- Option of PTO/PTI with individual hydraulic clutches
- Rigid cast iron housing
- Helical ground gearwheels in casehardened and highly alloyed steel
- Hydraulic multi-plate clutch
- Oil system with direct driven oil pump, cooler, filter, valves etc.
- Pressure lubricated spherical roller bearings
- Designed according to the rules of the classification societies
- Each gearbox is tested and approved in test bed

Variants:

60OD prepared for OD system

Manufacturer of **mekanord** gearboxes

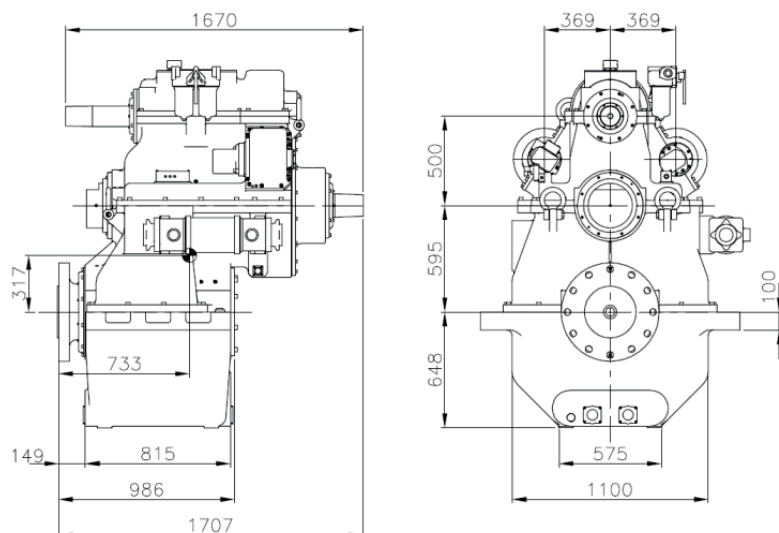
For further details and additional information,
please contact our technical sales organization

sales@meproduction.dk



MEPRODUCTION
EFFICIENCY THROUGH SIMPLICITY

600D - MARINE GEARBOX



Reduction Ratio	Power Factor kW/RPM	Input Shaft Diameter mm
2,84-3,67-4,06:1	3,70	130
4,44:1	3,60	130
4,94:1	3,00	130
5,61:1	2,30	130
5,94:1	2,30	130
6,06:1	1,97	130
8,18:1	1,50	130

PTO/PTI:

PTO/PTI with free shaft

PTO max step-up 1:2,24

PTI max step-up 1:3,21

Max torque from PTO: 4000 Nm

Max torque from PTO/PTI: 8500 Nm

Weight:

Approx. 5400 kg plus approx. 70 kg per PTO

Gearbox:

- Prepared for OD system
- Compact design
- Large economical reduction ratio
- Option of PTO/PTI with individual hydraulic clutches
- Rigid cast iron housing
- Helical ground gearwheels in casehardened and highly alloyed steel
- Hydraulic multi-plate clutch
- Oil system with direct driven oil pump, cooler, filter, valves etc.
- Pressure lubricated spherical roller bearings
- Designed according to the rules of the classification societies
- Each gearbox is tested and approved in test bed

Variants:

60HS with built-in servo system for CP propeller



Manufacturer of **mekanord** gearboxes

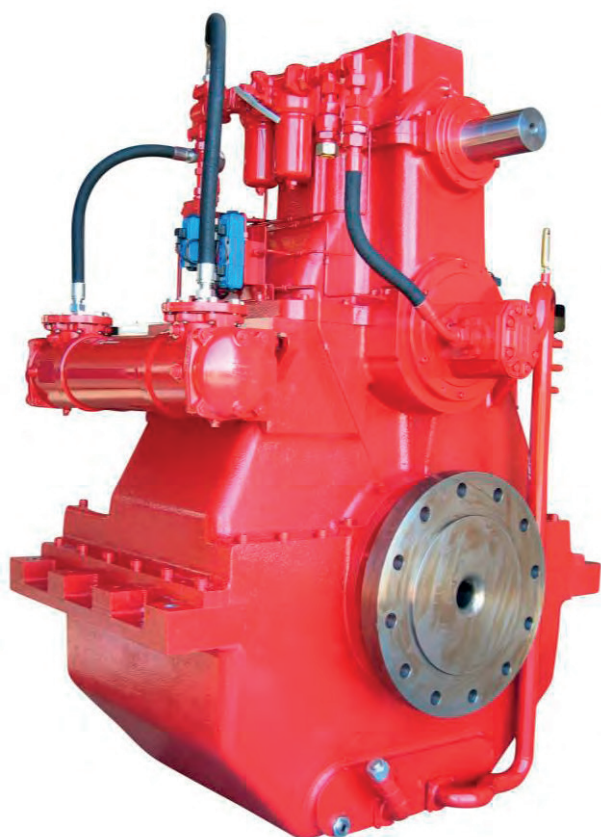
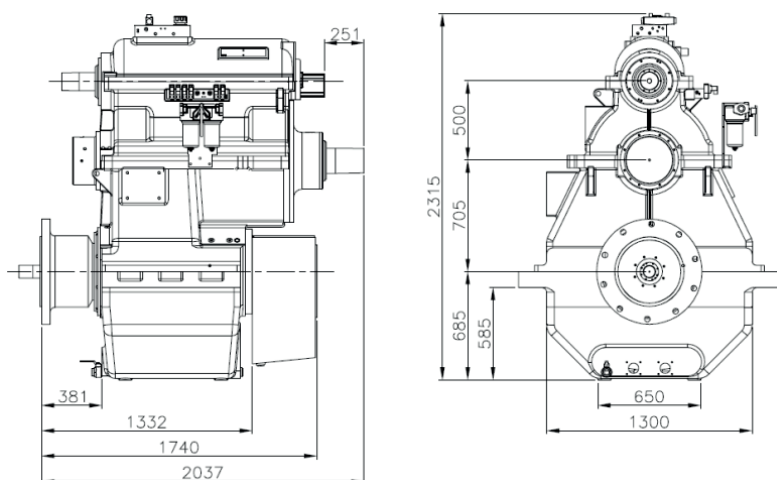
For further details and additional information,
please contact our technical sales organization

sales@meproduction.dk



MEPRODUCTION
EFFICIENCY THROUGH SIMPLICITY

70HS - MARINE GEARBOX



Manufacturer of **mekanord** gearboxes

Reduction Ratio	Power Factor kW/RPM	Input Shaft Diameter mm
3,05:1	7,00	160
3,53:1	6,80	160
4,16:1	5,90	160
4,44:1	5,30	160
5,05:1	4,50	160
5,58:1	3,80	160
5,94:1	3,50	160
7,12:1	2,69	160
8,12:1	2,15	160

Servo for CP Propeller:

Max force = 1500 kN

Max stroke = 175 mm

PTO/PTI:

PTO/PTI with free shaft

PTO max step-up 1:2,24

PTI max step-up 1:3,21

Max torque from PTO: 4000 Nm

Max torque from PTO/PTI: 8500 Nm

Weight:

Approx. 6800 kg plus approx. 70 kg per PTO

Gearbox:

- Built-in servo system for CP propeller
- Compact design
- Large economical reduction ratio
- Option of PTO/PTI with individual hydraulic clutches
- Rigid cast iron housing
- Helical ground gearwheels in casehardened and highly alloyed steel
- Hydraulic multi-plate clutch
- Oil system with direct driven oil pump, cooler, filter, valves etc.
- Pressure lubricated spherical roller bearings
- Designed according to the rules of the classification societies
- Each gearbox is tested and approved in test bed

Variants:

70OD prepared for OD system

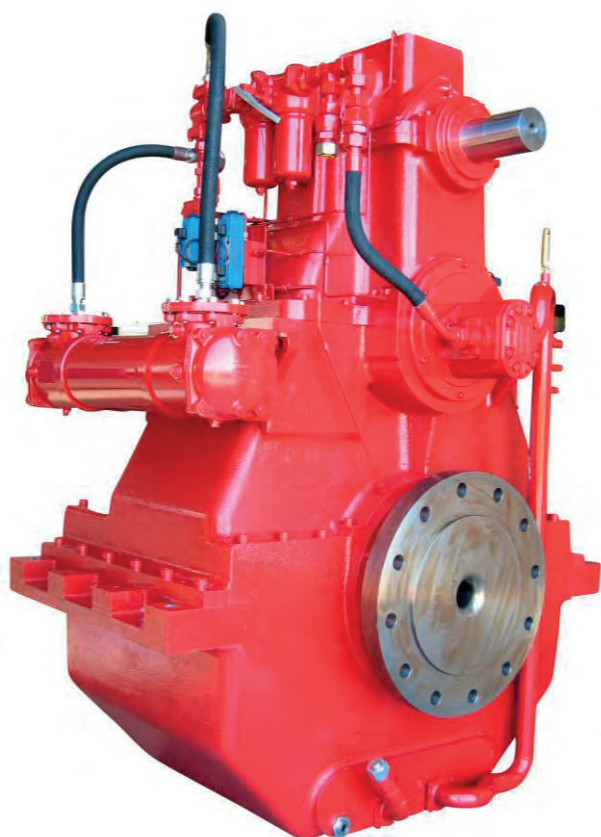
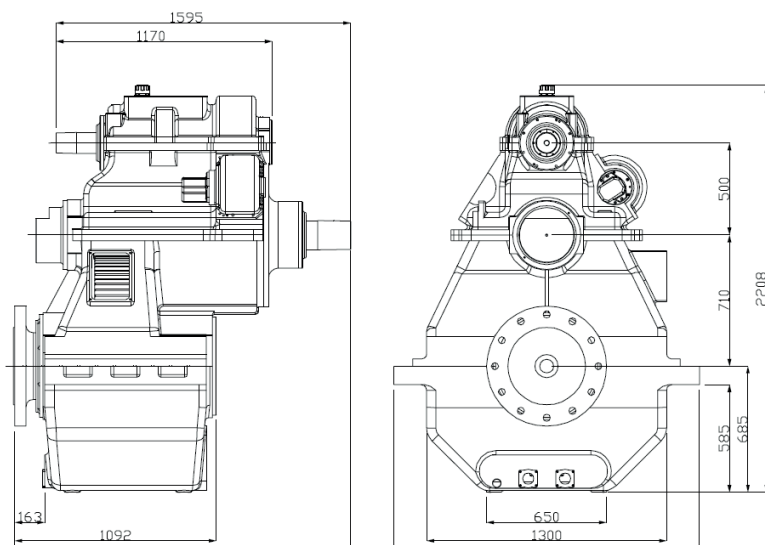
For further details and additional information,
please contact our technical sales organization

sales@meproduction.dk



MEPRODUCTION
EFFICIENCY THROUGH SIMPLICITY

700D - MARINE GEARBOX



Manufacturer of **mekanord** gearboxes

Reduction Ratio	Power Factor kW/RPM	Input Shaft Diameter mm
3,05:1	7,00	160
3,53:1	6,80	160
4,16:1	5,90	160
4,44:1	5,30	160
5,05:1	4,50	160
5,58:1	3,80	160
5,94:1	3,50	160
7,12:1	2,69	160
8,12:1	2,15	160

PTO/PTI:

PTO/PTI with free shaft

PTO max step-up 1:2,24

PTI max step-up 1:3,21

Max torque from PTO: 4000 Nm

Max torque from PTO/PTI: 8500 Nm

Weight:

Approx. 6750 kg

Gearbox:

- Prepared for OD system
- Compact design
- Large economical reduction ratio
- Option of PTO/PTI with individual hydraulic clutches
- Rigid cast iron housing
- Helical ground gearwheels in casehardened and highly alloyed steel
- Hydraulic multi-plate clutch
- Oil system with direct driven oil pump, cooler, filter, valves etc.
- Pressure lubricated spherical roller bearings
- Designed according to the rules of the classification societies
- Each gearbox is tested and approved in test bed

Variants:

70HS with built-in servo system for CP propeller

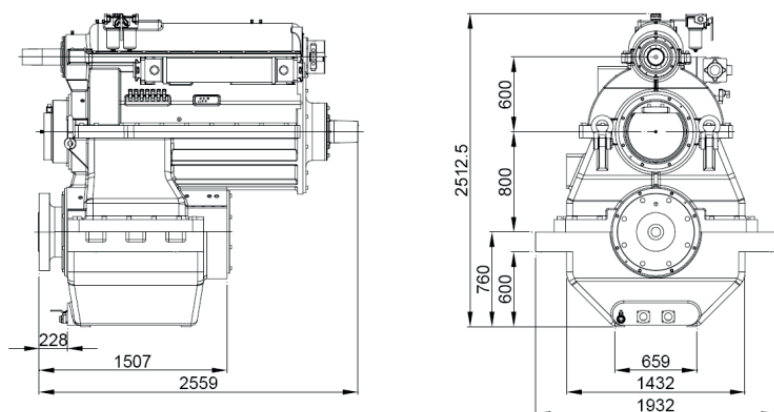
For further details and additional information,
please contact our technical sales organization

sales@meproduction.dk



MEPRODUCTION
EFFICIENCY THROUGH SIMPLICITY

800D - MARINE GEARBOX



Reduction Ratio	Power Factor kW/RPM	Input Shaft Diameter mm
2,95-3,58:1	9,90	180
4,16:1	8,80	180
4,33:1	7,60	180
4,95:1	7,00	180
5,59:1	5,80	180
6,15:1	4,50	180

PTO/PTI:

PTO/PTI with free shaft

PTO max step-up 1:2,24

PTI max step-up 1:3,21

Max torque from PTO: 4000 Nm

Max torque from PTO/PTI: 8500 Nm

Weight:

Approx. 14300 kg

Gearbox:

- Prepared for OD system
- Compact design
- Large economical reduction ratio
- Option of PTO/PTI with individual hydraulic clutches
- Rigid cast iron housing
- Helical ground gearwheels in casehardened and highly alloyed steel
- Hydraulic multi-plate clutch
- Oil system with direct driven oil pump, cooler, filter, valves etc.
- Pressure lubricated spherical roller bearings
- Designed according to the rules of the classification societies
- Each gearbox is tested and approved in test bed



Manufacturer of **mekanord** gearboxes

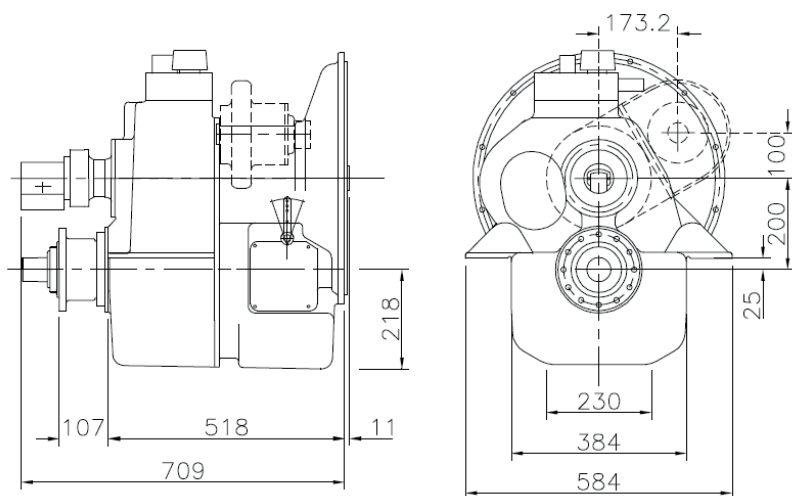
For further details and additional information,
please contact our technical sales organization

sales@meproduction.dk



MEPRODUCTION
EFFICIENCY THROUGH SIMPLICITY

200HSC - MARINE GEARBOX



Reduction Ratio	Power Factor kW/RPM	Input Shaft Diameter mm
2,13:1	0,260	57
2,55:1	0,226	57
2,94:1	0,224	57

Servo for CP Propeller:

Max force = 75 kN

Max stroke = 70 mm

PTO:

PTO with SAE B-flange and 13 tooth 7/8" involute inside spline

Max torque from PTO: 400 Nm

Weight:

Approx. 275 kg plus approx. 25 kg per PTO

Gearbox:

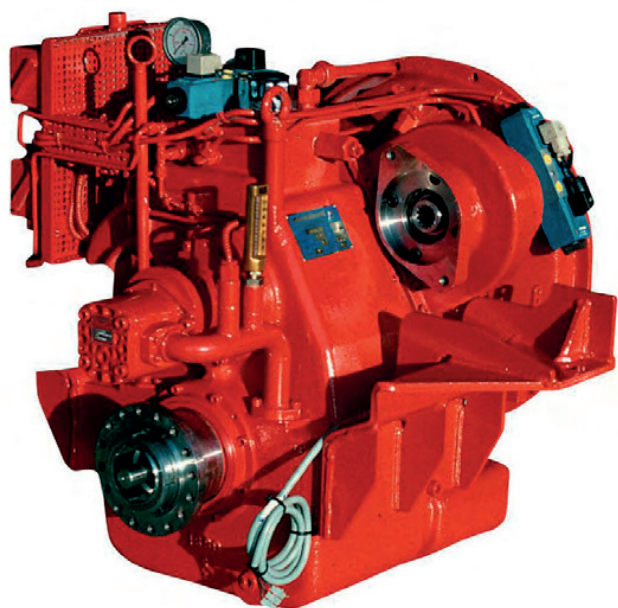
- Built-in servo system for CP propeller
- Compact design
- Option of 1 PTO with own hydraulic clutch
- Rigid cast iron housing
- Helical ground gearwheels in casehardened and highly alloyed steel
- Hydraulic multi-plate clutch
- Oil system with direct driven oil pump, cooler, filter, valves etc.
- Pressure lubricated spherical roller bearings
- Designed according to the rules of the classification societies
- Each gearbox is tested and approved in test bed

Variants:

200HSC-IS with built-in intermediate shaft for counter rotating propeller

200HSC-U with U-drive

200HSC-U-IS with U-drive and intermediate shaft for counter rotating propeller



Manufacturer of **mekanord** gearboxes

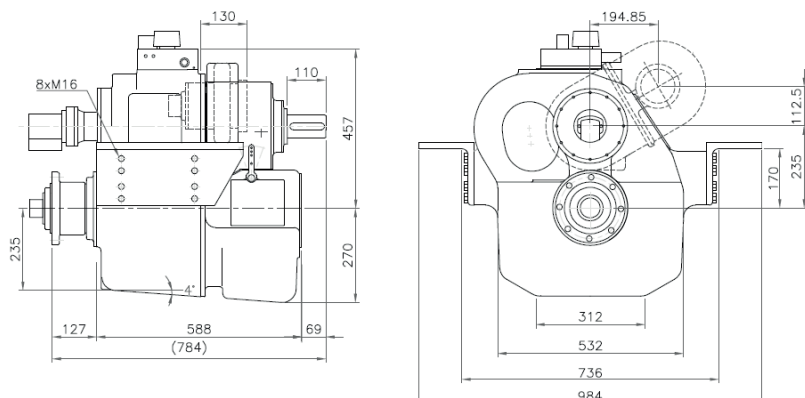
For further details and additional information,
please contact our technical sales organization

sales@meproduction.dk



MEPRODUCTION
EFFICIENCY THROUGH SIMPLICITY

235HSC - MARINE GEARBOX



Reduction Ratio	Power Factor kW/RPM	Input Shaft Diameter mm
1,96-2,45:1	0,350	65
2,94:1	0,310	65
3,43:1	0,226	65

Servo for CP Propeller:

Max force = 110 kN

Max stroke = 80 mm

PTO:

PTO with SAE B-flange and 13 tooth 7/8" involute inside spline

Max torque from PTO: 600 Nm

Weight:

Approx. 400 kg plus approx. 25 kg per PTO

Gearbox:

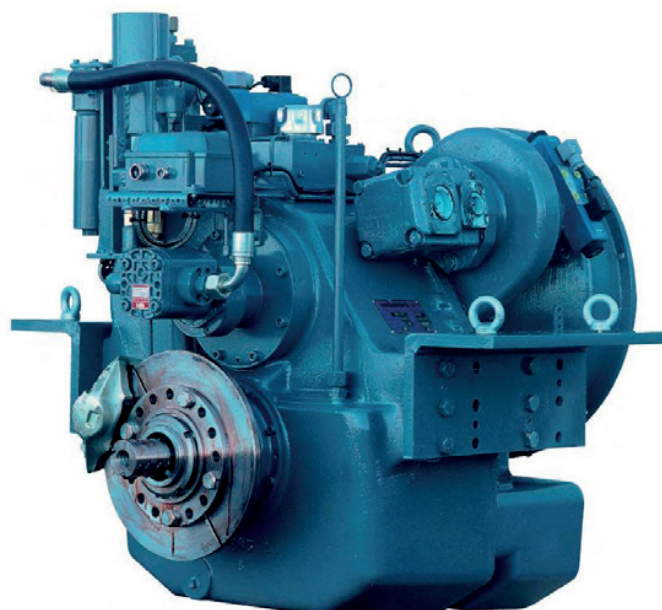
- Built-in servo system for CP propeller
- Compact design
- Option of 1 PTO with own hydraulic clutch
- Rigid cast iron housing
- Helical ground gearwheels in casehardened and highly alloyed steel
- Hydraulic multi-plate clutch
- Oil system with direct driven oil pump, cooler, filter, valves etc.
- Pressure lubricated spherical roller bearings
- Designed according to the rules of the classification societies
- Each gearbox is tested and approved in test bed

Variants:

235HSC-IS with built-in intermediate shaft for counter rotating propeller

235HSC-U with U-drive

235HSC-U-IS with U-drive and intermediate shaft for counter rotating propeller



Manufacturer of **mekanord** gearboxes

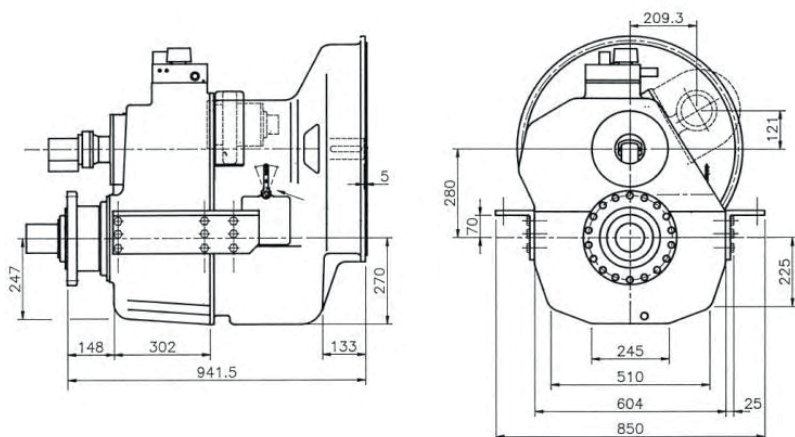
For further details and additional information,
please contact our technical sales organization

sales@meproduction.dk



MEPRODUCTION
EFFICIENCY THROUGH SIMPLICITY

280HSC - MARINE GEARBOX



Reduction Ratio	Power Factor kW/RPM	Input Shaft Diameter mm
1,75-2,06-2,55:1	0,610	80
3,06:1	0,570	80
3,47:1	0,610	80

Servo for CP Propeller:

Max force = 156 kN

Max stroke = 114 mm

PTO:

PTO with SAE B-flange and 14 tooth 1 ¼" involute inside spline

Step-up 1:1,11

Max torque from PTO: 600 Nm

Weight:

Approx. 700 kg plus approx. 30 kg per PTO

Gearbox:

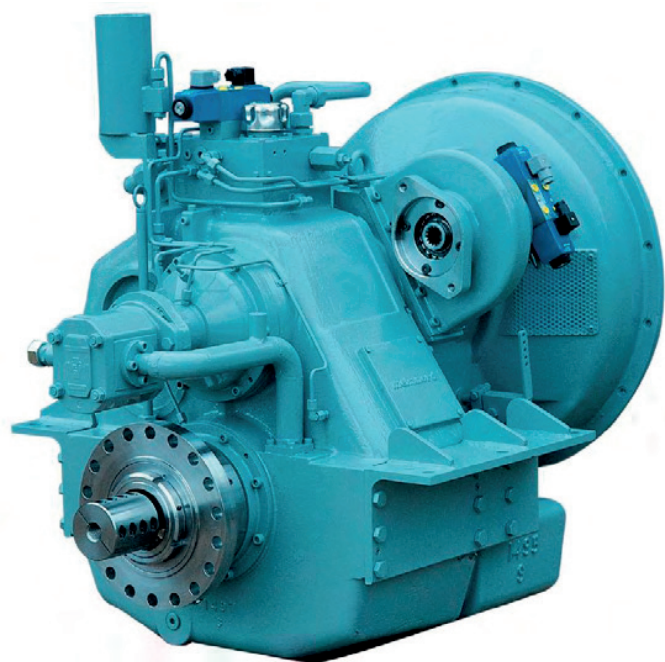
- Built-in servo system for CP propeller
- Compact design
- Option of 1 PTO with own hydraulic clutch
- Rigid cast iron housing
- Helical ground gearwheels in casehardened and highly alloyed steel
- Hydraulic multi-plate clutch
- Oil system with direct driven oil pump, cooler, filter, valves etc.
- Pressure lubricated spherical roller bearings
- Designed according to the rules of the classification societies
- Each gearbox is tested and approved in test bed

Variants:

280HSC-IS with built-in intermediate shaft for counter rotating propeller

280HSC-U with U-drive

280HSC-U-IS with U-drive and built-in intermediate shaft for counter rotating propeller



Manufacturer of **mekanord** gearboxes

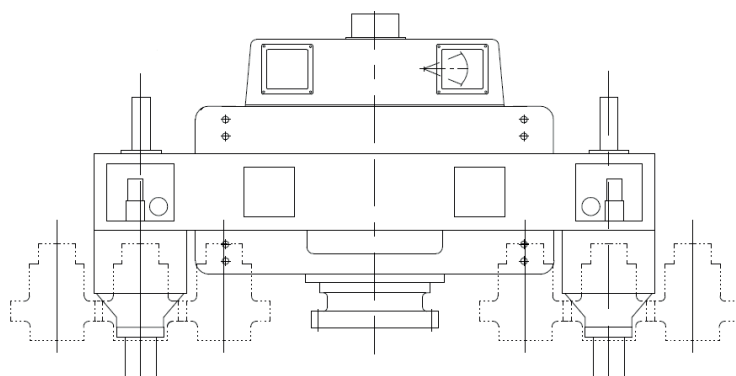
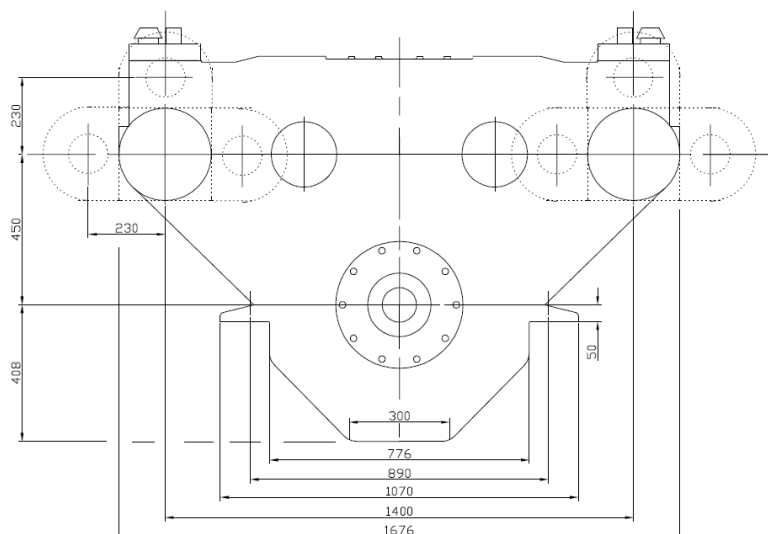
For further details and additional information,
please contact our technical sales organization

sales@meproduction.dk



MEPRODUCTION
EFFICIENCY THROUGH SIMPLICITY

TWIN1400 - MARINE GEARBOX



Reduction Ratio	Power Factor kW/RPM	Input Shaft Diameter mm
2,03-4,03-5,04:1	2x0,302	2X60
6,11:1	2x0,322	2X60
7,18:1	2x0,229	2X60

Servo for CP Propeller:

Max force = 200 kN

Max stroke = 124 mm

PTO:

PTO with SAE C-flange and 14 tooth 1 1/4" involute inside spline

Other SAE and ISO flanges and splines available

Free shaft end also available

Max torque from PTO: 800 Nm

Weight:

Approx. 1700 kg plus approx. 25 kg per PTO

Gearbox:

- Built-in servo system for CP propeller
- Compact design
- Large economical reduction ratio
- Option of 1, 2 or 3 PTOs each with own hydraulic clutch
- Rigid cast iron housing
- Helical ground gearwheels in casehardened, highly alloyed steel
- Hydraulic multi-plate clutch
- Oil system with direct driven oil pump, cooler, filter, valves etc.
- Pressure lubricated spherical roller bearings
- Designed according to the rules of the classification societies
- Each gearbox is tested and approved in test bed

Variants:

TWIN1400-U with U-drive

TWIN1400OD prepared for OD system

Manufacturer of **mekanord** gearboxes

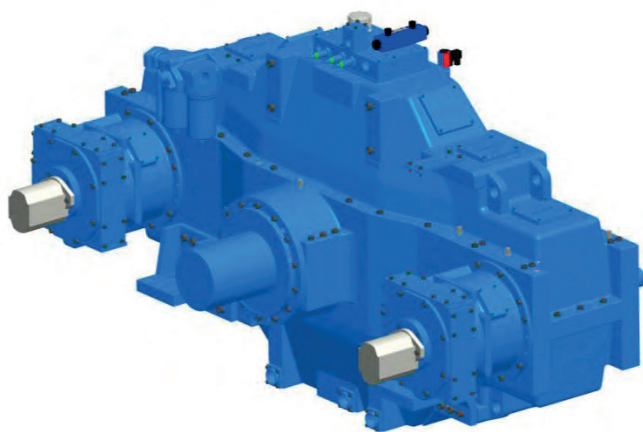
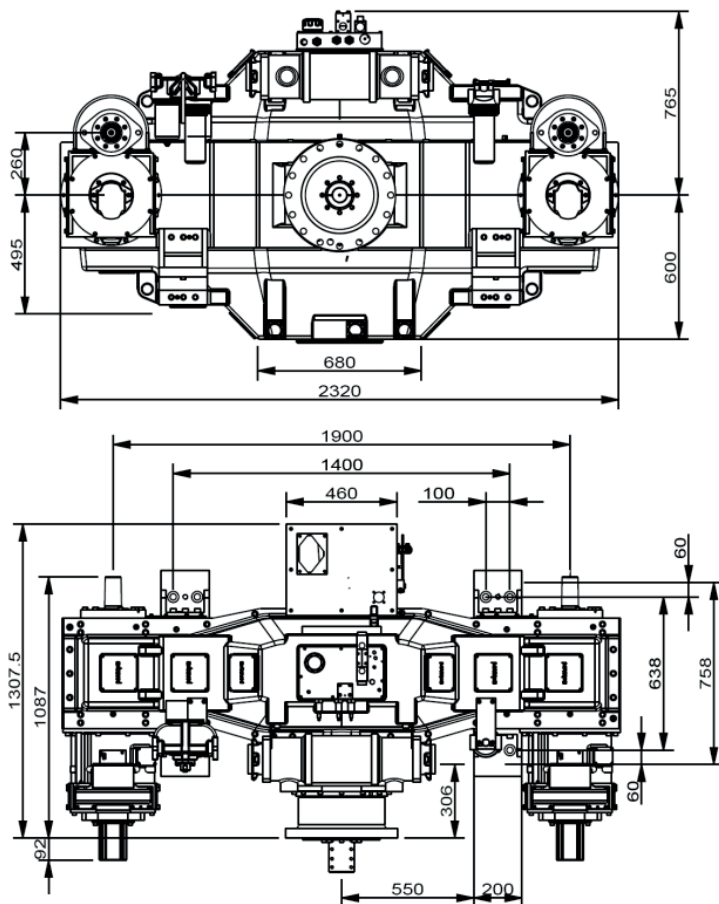
For further details and additional information,
please contact our technical sales organization

sales@meproduction.dk



MEPRODUCTION
EFFICIENCY THROUGH SIMPLICITY

TWIN1800 - MARINE GEARBOX



Reduction Ratio	Power Factor kW/RPM	Input Shaft Diameter mm
2,34-4,05-4,55:1	2x0,540	2X60
5,05-6,05 : 1	2x0,540	2X60
7,12-7,59 : 1	2x0,540	2X60

Servo for CP Propeller:

Max force = 200 kN

Max stroke = 124 mm

PTO:

PTO with SAE C-flange and 14 tooth 1 1/4" involute inside spline

Other SAE and ISO flanges and splines available

Free shaft end also available

Max torque from PTO: 800 Nm

Weight:

Approx. 2300 kg plus approx. 25 kg per PTO

Gearbox:

- Built-in servo system for CP propeller
- Compact design
- Large economical reduction ratio
- Option of 1, 2 or 3 PTOs each with own hydraulic clutch
- Rigid cast iron housing
- Helical ground gearwheels in casehardened, highly alloyed steel
- Hydraulic multi-plate clutch
- Oil system with direct driven oil pump, cooler, filter, valves etc.
- Pressure lubricated spherical roller bearings
- Designed according to the rules of the classification societies
- Each gearbox is tested and approved in test bed

Variants:

TWIN1800-U with U-drive

TWIN1800OD prepared for OD system

Manufacturer of **mekanord** gearboxes

For further details and additional information,
please contact our technical sales organization

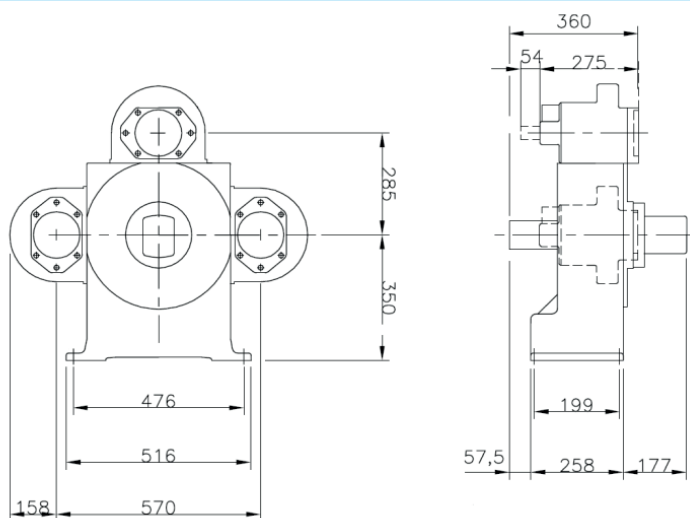
sales@meproduction.dk



MEPRODUCTION
EFFICIENCY THROUGH SIMPLICITY

PTO285 - MARINE GEARBOX

Dimension sketch, option of 1, 2 or 3 PTO

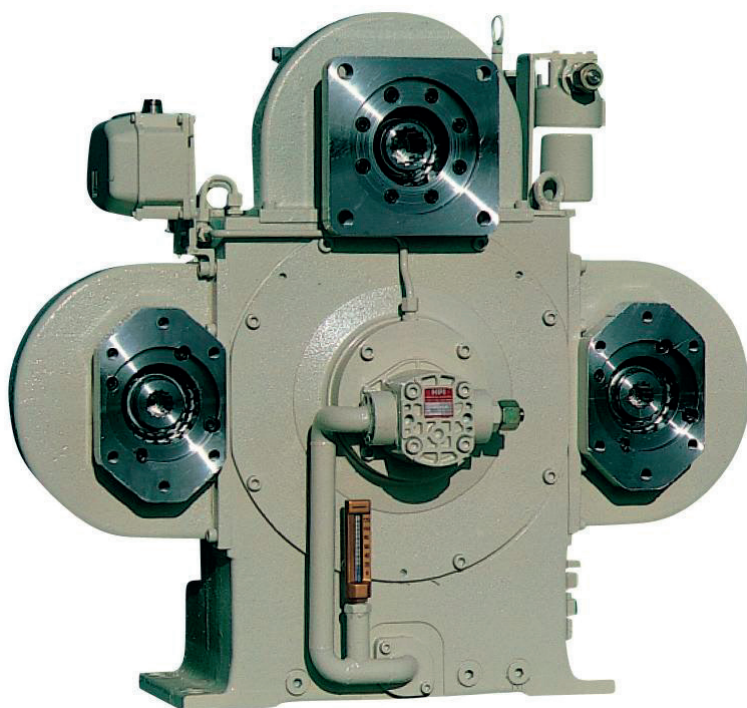


PTO gearbox with up to 3 output shafts

Weight approx. 250 kg with 3 PTOs mounted

Gearbox:

- Rigid cast iron housing with oil sump, supports and inspection lids
- Step-up ratio options: 1:1,76 - 1:1,02 - 1:1,33 - 1:1,49 - 1:1,90
- Max torque 900 Nm (Option of 1050 Nm)
- Roller bearings of double spherical type
- Gearwheels in casehardened and highly alloyed steel
- Ø80 mm input shaft
- Pressure transmitter and temperature sensor
- Oil system with pump, pressure regulating valve and cooler
- Hydraulic multidisc clutch
- Solenoid valve for remote control of clutch
- Drive shaft with SAE C flange and 14 tooth 1 3/4" involute inside spline (other configurations available on request)
- Pressure lubricating system for bearings and gears
- Designed according to the rules of the classification societies
- Each gearbox is tested and approved in test bed



Manufacturer of **mekanord** gearboxes

For further details and additional information,
please contact our technical sales organization

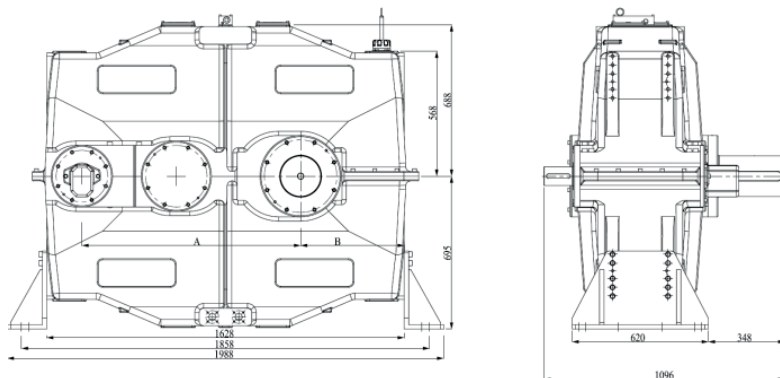
sales@meproduction.dk



MEPRODUCTION
EFFICIENCY THROUGH SIMPLICITY

PTO300 - MARINE GEARBOX

Dimension sketch, option of 1, 2, 3 or 4 PTO



PTO gearbox with up to 4 output shafts

Weight approx. 550 kg with 4 PTOs mounted

Gearbox:

- Rigid cast iron housing with oil sump, supports and inspection lids
- Step-up ratio options: 1:2,13 - 1:1,0 - 1:1,38 - 1:1,64 - 1:1,90
- Max torque 900 Nm (Option of 1050 Nm or 1600 Nm)
- Roller bearings of double spherical type
- Gearwheels in casehardened and highly alloyed steel
- Ø100 mm input shaft
- Pressure transmitter and temperature sensor
- Oil system with pump, pressure regulating valve and cooler
- Hydraulic multidisc clutch
- Solenoid valve for remote control of clutch
- Drive shaft with SAE C flange and 14 tooth 1 3/4" involute inside spline (other configurations available on request)
- Pressure lubricating system for bearings and gears
- Designed according to the rules of the classification societies
- Each gearbox is tested and approved in test bed

Manufacturer of **mekanord** gearboxes

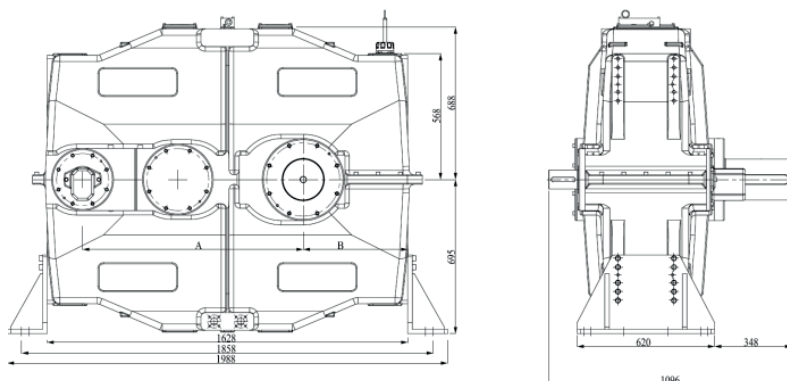
For further details and additional information,
please contact our technical sales organization

sales@meproduction.dk



MEPRODUCTION
EFFICIENCY THROUGH SIMPLICITY

PTO900 - MARINE GEARBOX



Step up Ratio	Speed RPM		Input Shaft Diameter mm
In	Out		
1:7,15	210	1502	900
1:8,71	173	1506	700
1:10,44	173	1805	900
1:12,44	146	1816	900
1:14,30	127	1820	900
1:15,83	113	1789	900

Most efficient PTO system for controllable pitch propulsion systems. Designed for 2-stroke engine applications with specific focus on environment and fuel economy.

Weight:

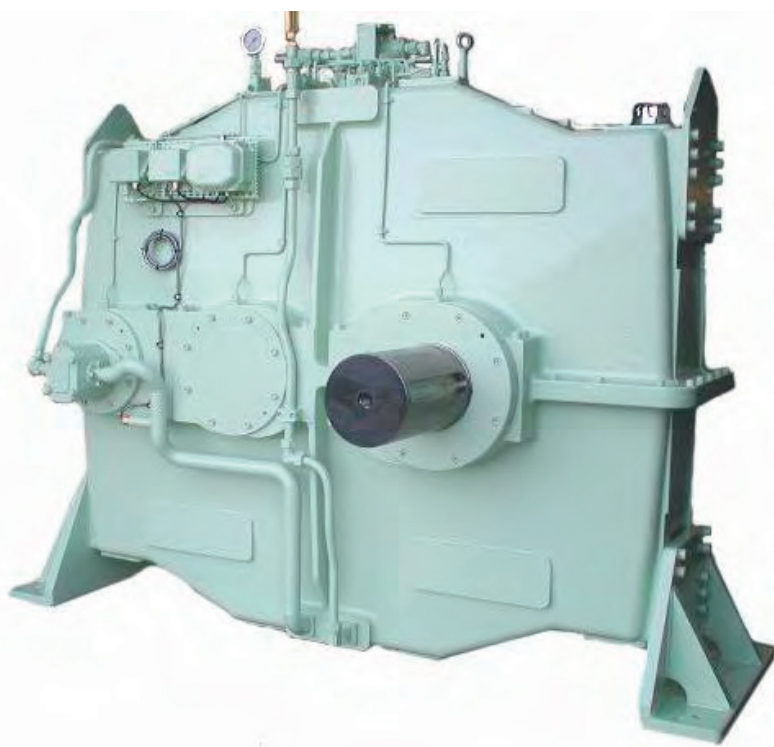
Approx. 2800 kg

Gearbox:

- Rigid cast iron housing with oil sump, supports and inspection lids
- Horizontal offset
- Roller bearings of double spherical type
- Tapered 1:30 input and output shafts
- Gearwheels in casehardened and highly alloyed steel
- Pressure transmitter and temperature sensor
- Oil system with direct driven oil pump, cooler, filter, valves, manometer etc.
- Pressure lubricating system for bearings and gears
- Designed according to the rules of the classification societies
- Built on emergency oil pump unit 1 kW with automatic start
- Each gearbox is tested and approved in test bed

Variants:

Customized step up ratios available on request
1 step or 2 step configurations



Manufacturer of **mekanord** gearboxes

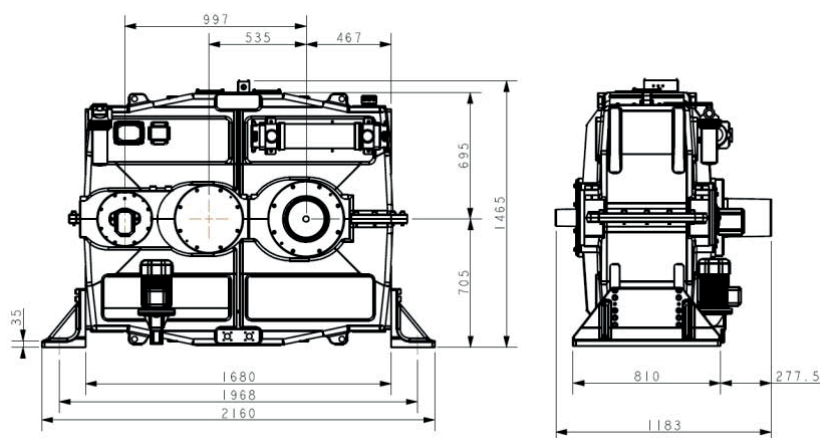
For further details and additional information,
please contact our technical sales organization

sales@meproduction.dk



MEPRODUCTION
EFFICIENCY THROUGH SIMPLICITY

PTO1500 - MARINE GEARBOX



Step up Ratio	Speed RPM		Input Shaft Diameter mm
In	Out		
1:10,44	173	1805	1650
1:10,79	167	1802	1650
1:14,20	127	1803	1350
1:16,37	110	1801	1250

Most efficient PTO system for controllable pitch propulsion systems. Designed for 2-stroke engine applications with specific focus on environment and fuel economy.

Weight:

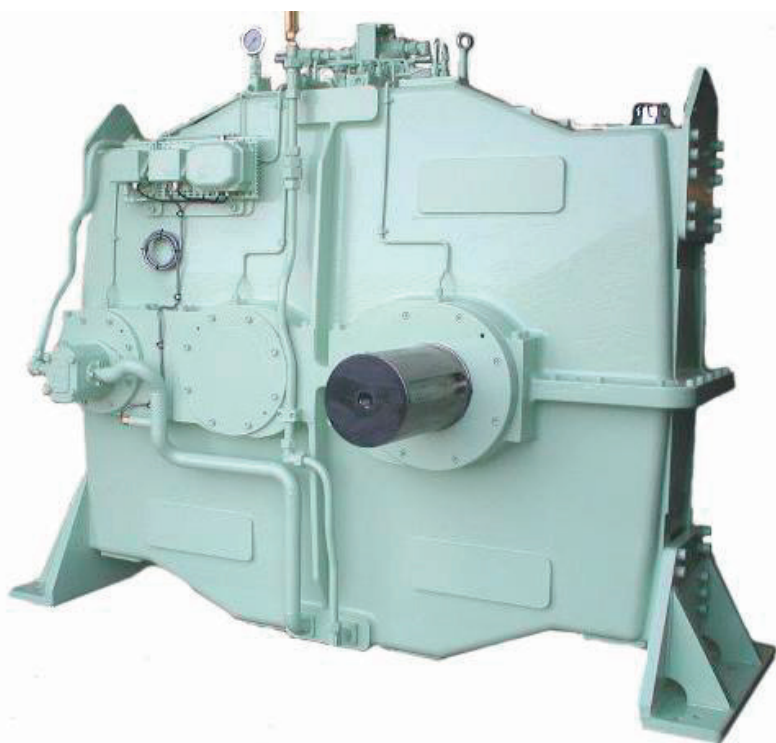
Approx. 3800 kg

Gearbox:

- Rigid cast iron housing with oil sump, supports and inspection lids
- Horizontal offset
- Roller bearings of double spherical type
- Tapered 1:30 input and output shafts
- Gearwheels in casehardened and highly alloyed steel
- Pressure transmitter and temperature sensor
- Oil system with direct driven oil pump, cooler, filter, valves, manometer etc.
- Pressure lubricating system for bearings and gears
- Designed according to the rules of the classification societies
- Built on emergency oil pump unit 1 kW with automatic start
- Each gearbox is tested and approved in test bed

Variants:

Customized step up ratios available on request
1 step or 2 step configurations



Manufacturer of **mekanord** gearboxes

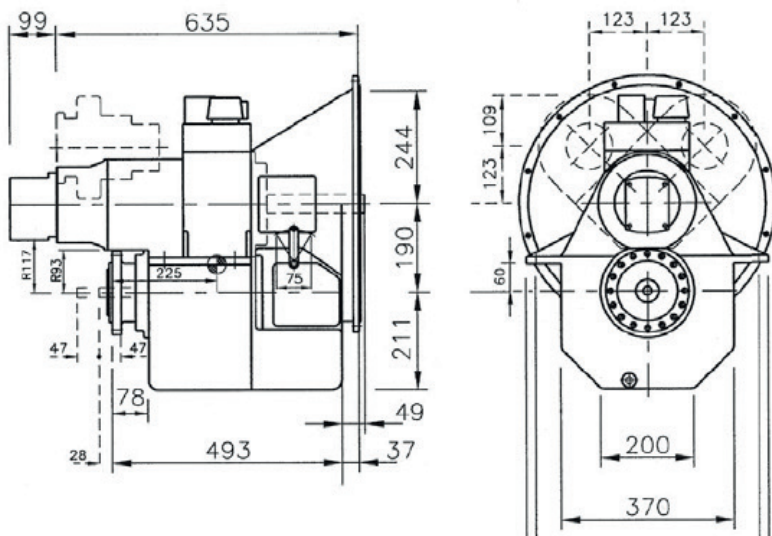
For further details and additional information,
please contact our technical sales organization

sales@meproduction.dk



MEPRODUCTION
EFFICIENCY THROUGH SIMPLICITY

190HS - MARINE GEARBOX



Reduction Ratio	Power Factor kW/RPM	Input Shaft Diameter mm
1,97-2,48-2,96:1	0,140	44
3,50:1	0,100	44
4,06:1	0,098	44
4,50:1	0,094	44

Servo for CP Propeller:

Max force = 30 kN

Max stroke = 94 mm

PTO/:

PTO with SAE C-flange and 14 tooth 1 1/4" involute inside spline

Other SAE and ISO flanges and splines available

Free shaft end also available

Max torque from PTO: 350 Nm

Weight:

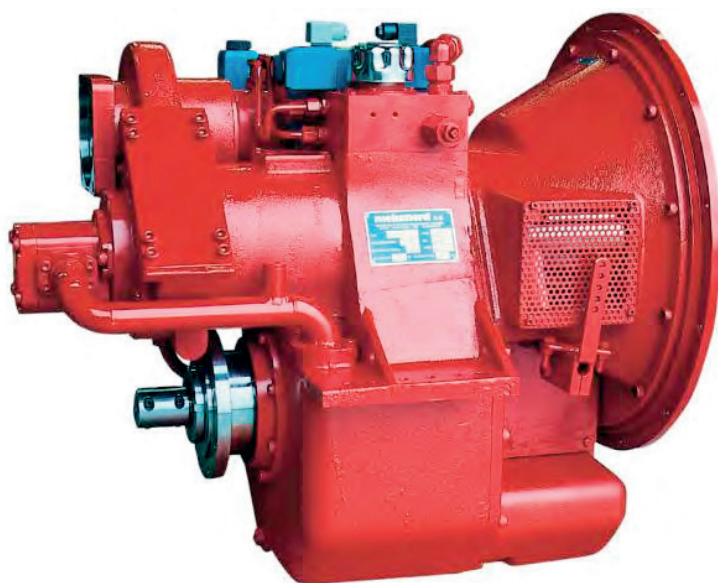
Approx. 200 kg plus approx. 20 kg per PTO

Gearbox:

- Built-in servo system for CP propeller
- Compact design
- Large economical reduction ratio
- Optional for 1 or 2 PTO each with own hydraulic clutch
- Rigid cast iron housing
- Helical ground gearwheels in casehardened and highly alloyed steel
- Hydraulic multi-plate clutch
- Oil system with direct driven oil pump, cooler, filter, valves etc.
- Pressure lubricated spherical roller bearings
- Designed according to the rules of the classification societies
- Each gearbox is tested and approved in test bed

Variants:

190HS/LS extra long stroke for feathering propeller



Manufacturer of **mekanord** gearboxes

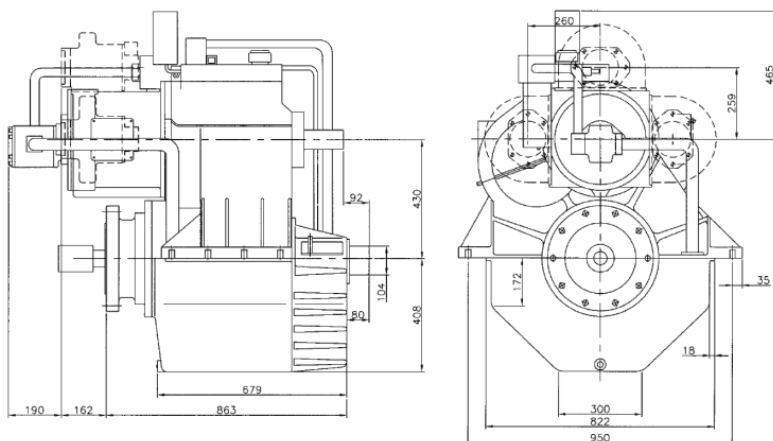
For further details and additional information,
please contact our technical sales organization

sales@meproduction.dk



MEPRODUCTION
EFFICIENCY THROUGH SIMPLICITY

430-2HS - MARINE GEARBOX



Reduction Ratio	Power Factor kW/RPM	Input Shaft Diameter mm
6,11:1	0,575	80
7,08:1	0,540	70
7,31:1	0,508	70
8,00:1	0,495	70
9,14:1	0,436	70

Servo for CP Propeller:

Max force = 200 kN

Max stroke = 124 mm

PTO:

PTO with SAE C-flange and 14 tooth 1 1/4" involute inside spline

Other SAE and ISO flanges and splines available

Free shaft end also available

Max torque from PTO: 900 Nm

Weight:

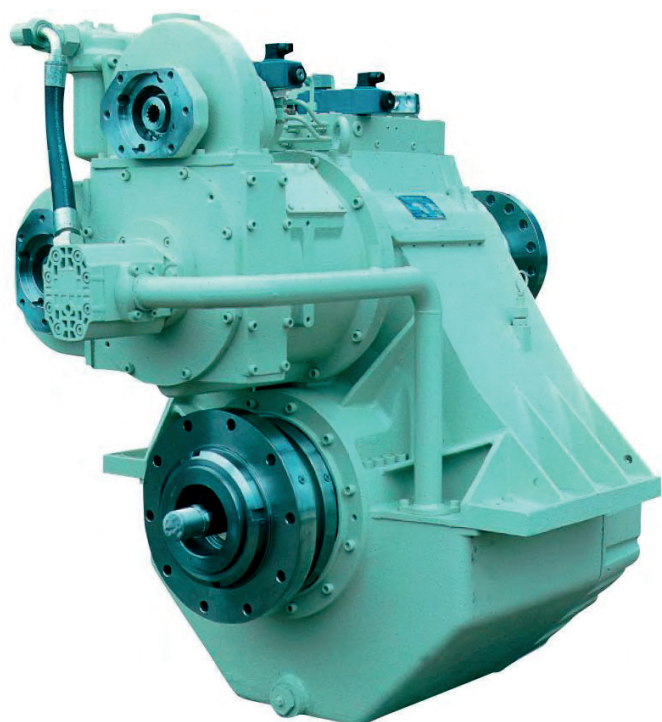
Approx. 1440 kg plus approx. 40 kg per PTO

Gearbox:

- Built-in servo system for CP propeller
- Compact design
- Large economical reduction ratio
- Option of 1, 2 or 3 PTOs each with own hydraulic clutch
- Rigid cast iron housing
- Helical ground gearwheels in casehardened and highly alloyed steel
- Hydraulic multi-plate clutch
- Oil system with direct driven oil pump, cooler, filter, valves etc.
- Pressure lubricated spherical roller bearings
- Designed according to the rules of the classification societies
- Each gearbox is tested and approved in test bed

Variants:

430HS 1-step gearbox for lower reduction ratios



Manufacturer of **mekanord** gearboxes

For further details and additional information,
please contact our technical sales organization

sales@meproduction.dk



MEPRODUCTION
EFFICIENCY THROUGH SIMPLICITY