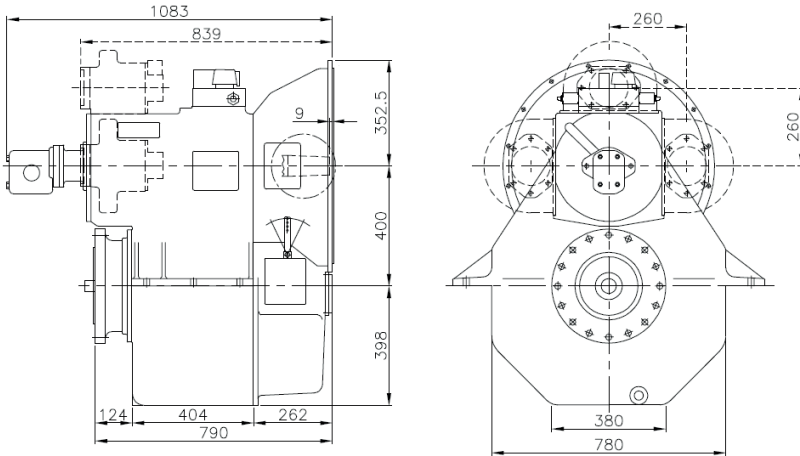


# 400HS - MARINE GEARBOX



Reduction Ratio	Power Factor kW/RPM	Input Shaft Diameter mm
3,04-3,57-4,11-4,65-5,17:1	0,540	70
5,53:1	0,518	70
5,94:1	0,453	70
6,59:1	0,367	70
6,89:1	0,344	70

#### Servo for CP Propeller:

Max force = 150 kN

Max stroke = 120 mm

#### PTO:

PTO with SAE C-flange and 14 tooth 1 1/4" involute inside spline

Other SAE and ISO flanges and splines available

Free shaft end also available

Max torque from PTO: 900 Nm

#### Weight:

Approx. 900 kg plus approx. 25 kg per PTO

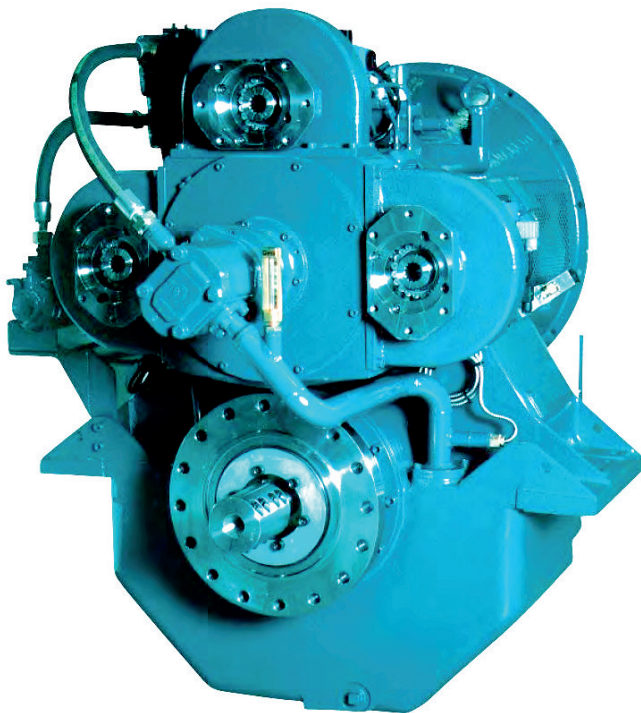
#### Gearbox:

- Built-in servo system for CP propeller
- Compact design
- Large economical reduction ratio
- Option of 1, 2 or 3 PTOs each with own hydraulic clutch
- Rigid cast iron housing
- Helical ground gearwheels in casehardened and highly alloyed steel
- Hydraulic multi-plate clutch
- Oil system with direct driven oil pump, cooler, filter, valves etc.
- Pressure lubricated spherical roller bearings
- Designed according to the rules of the classification societies
- Each gearbox is tested and approved in test bed

#### Variants:

400HS/LS extra long stroke for feathering propeller

400HS with reverse gear for counter rotating propeller



Manufacturer of **mekanord** gearboxes

For further details and additional information,  
please contact our technical sales organization

[sales@meproduction.dk](mailto:sales@meproduction.dk)



**MEPRODUCTION**  
EFFICIENCY THROUGH SIMPLICITY