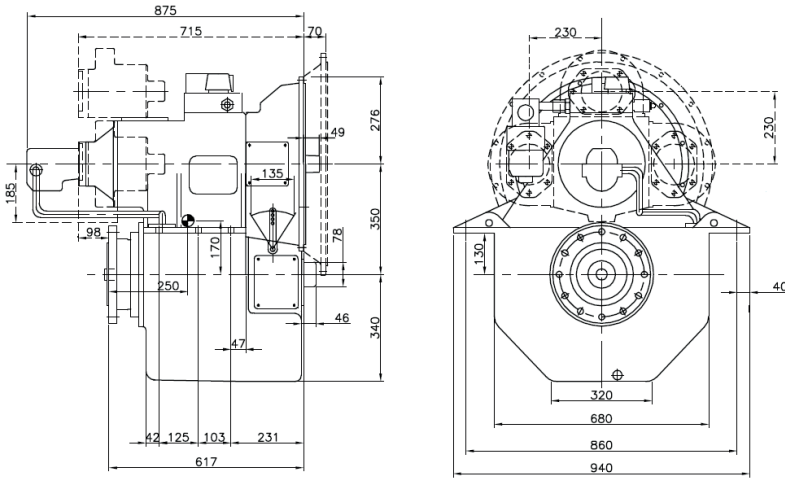


# 350HS - MARINE GEARBOX



Reduction Ratio	Power Factor kW/RPM	Input Shaft Diameter mm
1,96-2,53-3,04-3,52:1	0,302	60
4,14-4,65-5,12-5,53:1	0,302	60
5,94:1	0,278	55
6,35:1	0,236	55
6,94:1	0,208	55

#### Servo for CP Propeller:

Max force = 120 kN

Max stroke = 90 mm

#### PTO:

PTO with SAE C-flange and 14 tooth 1 ¼" involute inside spline

Other SAE and ISO flanges and splines available

Free shaft end also available

Max torque from PTO: 800 Nm

#### Weight:

Approx. 600 kg plus approx. 25 kg per PTO

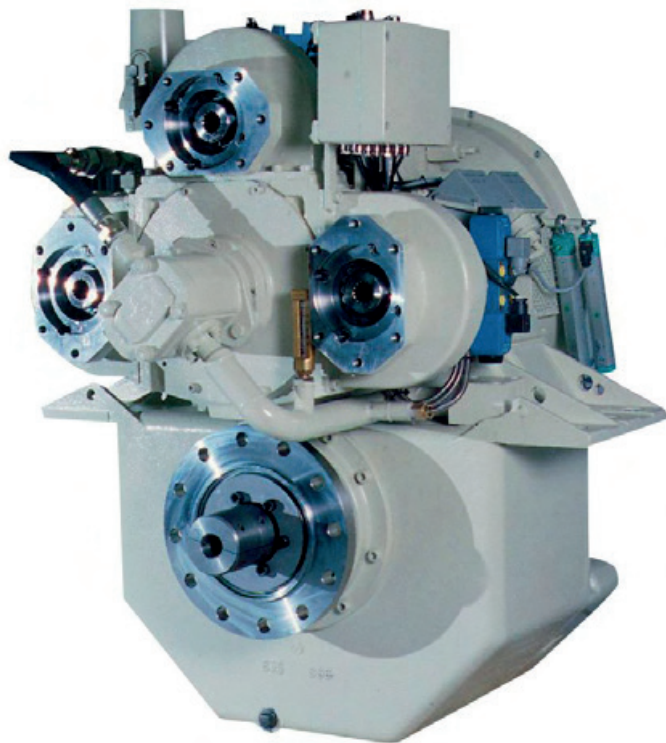
#### Gearbox:

- Built-in servo system for CP propeller
- Compact design
- Large economical reduction ratio
- Option of 1, 2 or 3 PTOs each with own hydraulic clutch
- Rigid cast iron housing
- Helical ground gearwheels in casehardened and highly alloyed steel
- Hydraulic multi-plate clutch
- Oil system with direct driven oil pump, cooler, filter, valves etc.
- Pressure lubricated spherical roller bearings
- Designed according to the rules of the classification

#### Variants:

350HS/LS extra long stroke for feathering propeller

350HS with reverse gear for counter rotating propeller



Manufacturer of **mekanord** gearboxes

For further details and additional information,  
please contact our technical sales organization

sales@meproduction.dk



**MEPRODUCTION**  
EFFICIENCY THROUGH SIMPLICITY