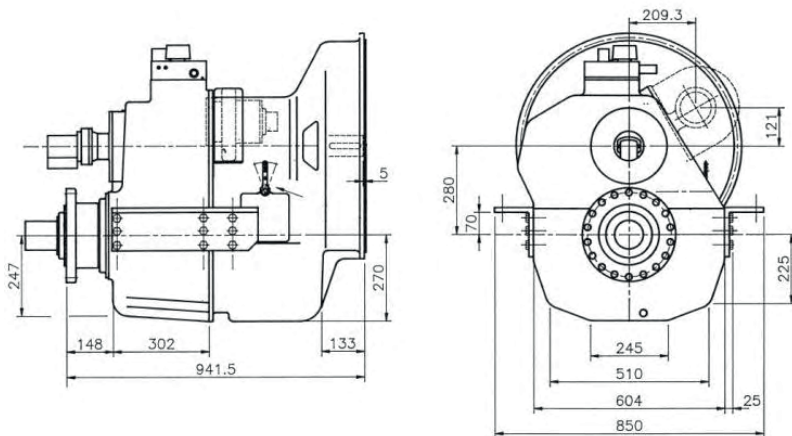


280HSC - MARINE GEARBOX



Reduction Ratio	Power Factor kW/RPM	Input Shaft Diameter mm
1,75-2,06-2,55:1	0,610	80
3,06:1	0,570	80
3,47:1	0,610	80

Servo for CP Propeller:

Max force = 156 kN
Max stroke = 114 mm

PTO:

PTO with SAE B-flange and 14 tooth 1 ¼" involute inside spline
Step-up 1:1,11
Max torque from PTO: 600 Nm

Weight:

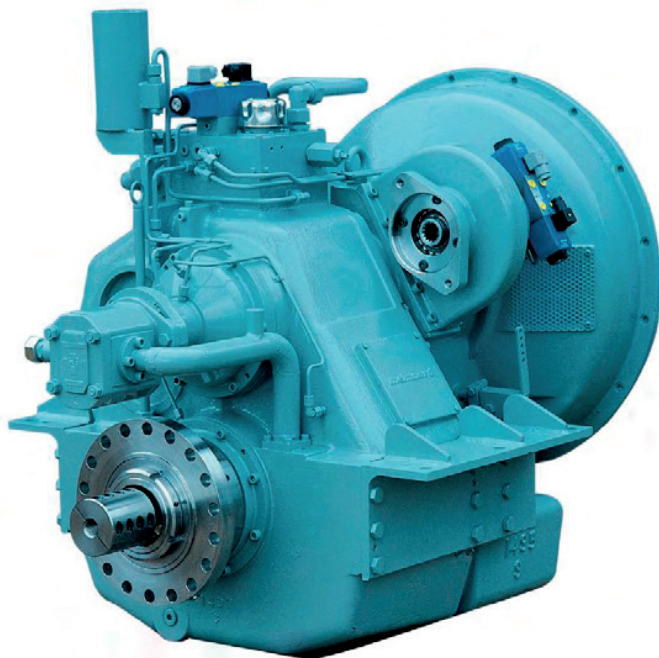
Approx. 700 kg plus approx. 30 kg per PTO

Gearbox:

- Built-in servo system for CP propeller
- Compact design
- Option of 1 PTO with own hydraulic clutch
- Rigid cast iron housing
- Helical ground gearwheels in casehardened and highly alloyed steel
- Hydraulic multi-plate clutch
- Oil system with direct driven oil pump, cooler, filter, valves etc.
- Pressure lubricated spherical roller bearings
- Designed according to the rules of the classification societies
- Each gearbox is tested and approved in test bed

Variants:

280HSC-IS with built-in intermediate shaft for counter rotating propeller
280HSC-U with U-drive
280HSC-U-IS with U-drive and built-in intermediate shaft for counter rotating propeller



Manufacturer of **mekanord** gearboxes

For further details and additional information,
please contact our technical sales organization

sales@meproduction.dk



MEPRODUCTION
EFFICIENCY THROUGH SIMPLICITY