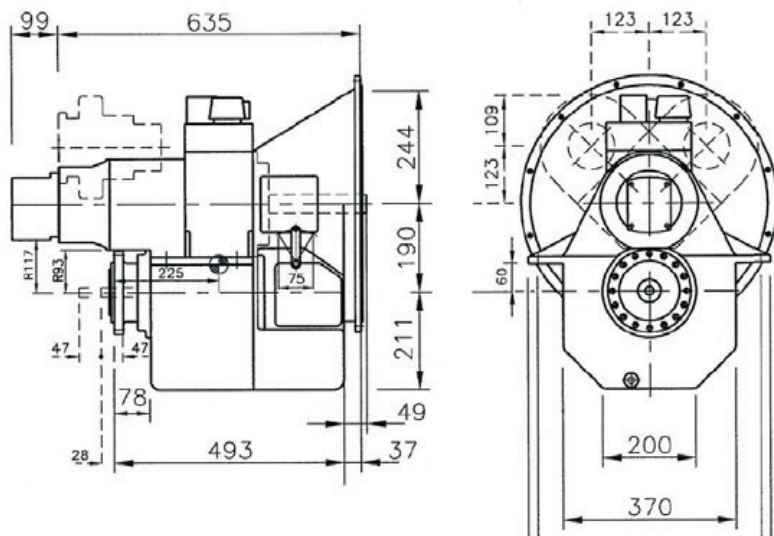


# 190HS - MARINE GEARBOX



Reduction Ratio	Power Factor kW/RPM	Input Shaft Diameter mm
1,97-2,48-2,96:1	0,140	44
3,50:1	0,100	44
4,06:1	0,098	44
4,50:1	0,094	44

#### Servo for CP Propeller:

Max force = 30 kN

Max stroke = 94 mm

#### PTO/:

PTO with SAE C-flange and 14 tooth 1 ¼" involute inside spline

Other SAE and ISO flanges and splines available

Free shaft end also available

Max torque from PTO: 350 Nm

#### Weight:

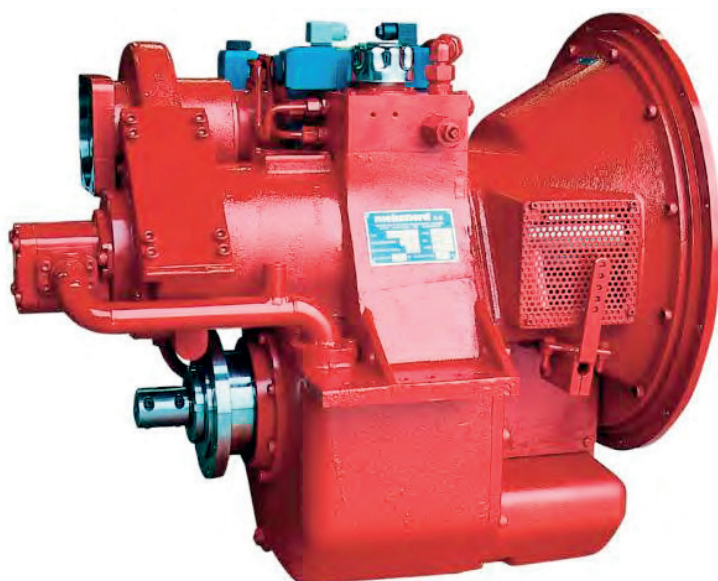
Approx. 200 kg plus approx. 20 kg per PTO

#### Gearbox:

- Built-in servo system for CP propeller
- Compact design
- Large economical reduction ratio
- Optional for 1 or 2 PTO each with own hydraulic clutch
- Rigid cast iron housing
- Helical ground gearwheels in casehardened and highly alloyed steel
- Hydraulic multi-plate clutch
- Oil system with direct driven oil pump, cooler, filter, valves etc.
- Pressure lubricated spherical roller bearings
- Designed according to the rules of the classification societies
- Each gearbox is tested and approved in test bed

#### Variants:

190HS/LS extra long stroke for feathering propeller



Manufacturer of **mekanord** gearboxes

For further details and additional information,  
please contact our technical sales organization

[sales@meproduction.dk](mailto:sales@meproduction.dk)



**MEPRODUCTION**  
EFFICIENCY THROUGH SIMPLICITY